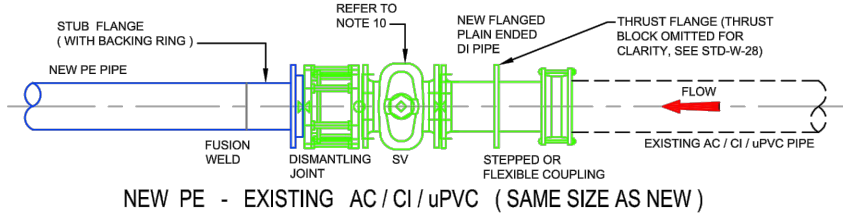
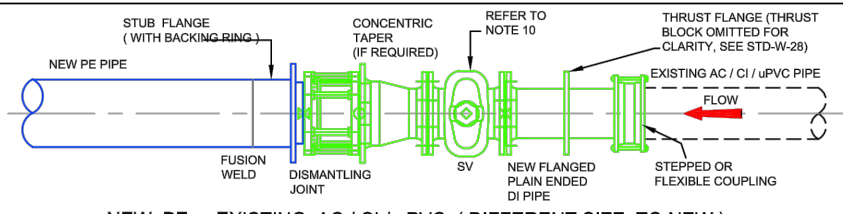


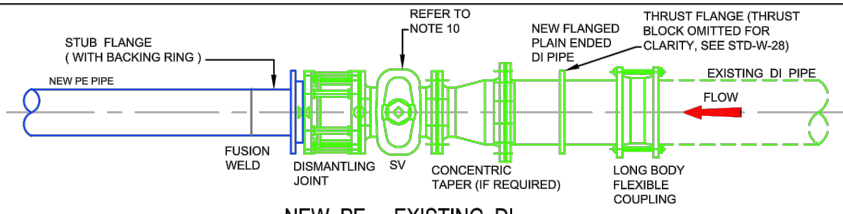
A



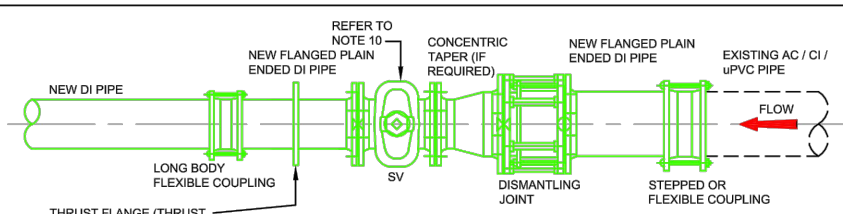
NEW PE - EXISTING AC/CI/uPVC (SAME SIZE AS NEW)



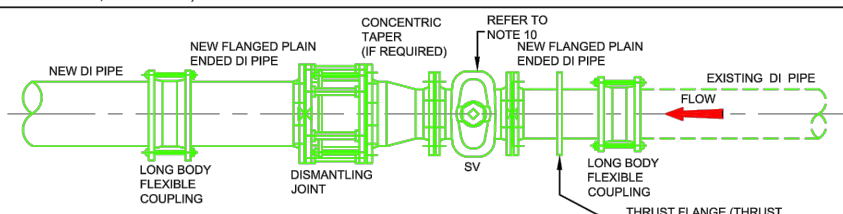
NEW PE - EXISTING AC/CI/uPVC (DIFFERENT SIZE TO NEW)



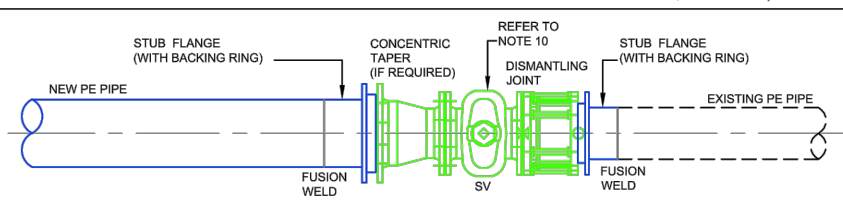
NEW PE - EXISTING DI



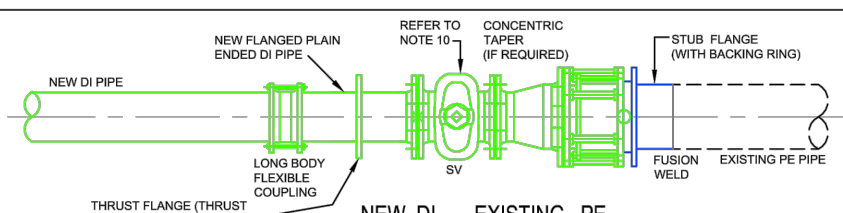
NEW DI - EXISTING AC/CI/uPVC



NEW DI - EXISTING DI

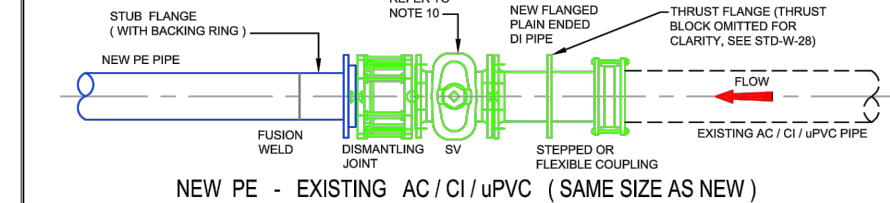


NEW PE - EXISTING PE

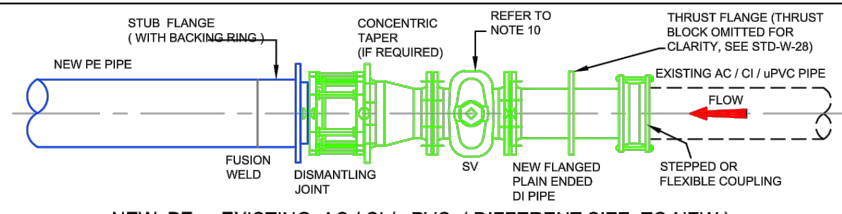


NEW DI - EXISTING PE

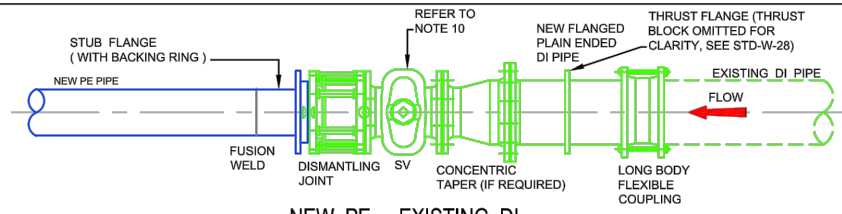
- ALL DIMENSIONS ARE IN MILLIMETRES (mm) UNLESS NOTED OTHERWISE.
- ALL BENDS, TEES, DEAD ENDS, ETC. OF PIPELINES TO BE ADEQUATELY RESTRAINED BY THRUST BLOCKS AS PER DRAWING No. STD-W-28. THRUST BLOCKS NOT SHOWN FOR CLARITY.
- BUTT FUSION WELDING AND ELECTRO FUSION JOINTING OF PIPES SHALL ONLY BE CARRIED OUT BY TRAINED OPERATIVES IN POSSESSION OF A CURRENT TRAINING CERTIFICATE, USING FULLY AUTOMATIC APPROVED JOINTING MACHINERIES IN ACCORDANCE WITH THE MANUFACTURER'S INSTRUCTIONS. THE IDENTITY OF THE PE PIPELINE MANUFACTURER SHALL BE MADE KNOWN TO IRISH WATER PRIOR TO COMMENCEMENT OF THE INSTALLATION. CERTIFICATION AND TESTING (INCLUDING INDEPENDENT THIRD PARTY CERTIFICATION) SHALL BE PROVIDED TO CONFIRM QUALITY ASSURANCE COMPLIANCE. EACH JOINT SHALL BE CLEARLY MARKED WITH THE JOINT LOGGED AUTOMATICALLY ON THE JOINTING MACHINE. A PRINTOUT OF THE JOINT DETAILS, WITH A GPS LOCATION OF EACH JOINT, SHALL BE PROVIDED AND RETAINED FOR QUALITY ASSURANCE PURPOSES.
- CONNECTING TO EXISTING MAINS IS TO BE CARRIED OUT BY IRISH WATER OR AN APPROVED IRISH WATER AGENT.
- WHEN EXISTING AC WATERMANS ARE PRESENT A SPECIFIC METHOD STATEMENT SHALL BE SUBMITTED TO IRISH WATER PRIOR TO WORKS TAKING PLACE AND SUBJECT TO WRITTEN APPROVAL. DETAILING THE PROTECTION TO BE PUT IN PLACE TO EXISTING MAINS, METHOD OF REMOVAL OF EXISTING AC, METHOD OF DISPOSAL OF EXISTING AC AND METHOD OF CONNECTION TO EXISTING AC.
- PIPE MATERIAL REFERENCES AS FOLLOWS:
AC - ASBESTOS CEMENT
DI - DUCTILE IRON
CI - CAST IRON
PE - POLYETHYLENE
uPVC - UNPLASTICISED POLY VINYL CHLORIDE
ST - STEEL
OTHER - REFERS TO ALL EXISTING PIPE MATERIALS OTHER THAN PE (TYPICALLY AC, DI, CI, uPVC & ST).
- SLUICE VALVE CHAMBERS TO BE IN ACCORDANCE WITH STD-W-14 (DI) AND STD-W-15 (PE). CHAMBERS NOT SHOWN FOR CLARITY.
- ALL THRUST FLANGES TO BE ADEQUATELY RESTRAINED BY THRUST BLOCKS AS PER DRAWING No. STD-W-28. THRUST BLOCKS NOT SHOWN FOR CLARITY.
- A HIGH LEVEL OF HEALTH & SAFETY PROCEDURES IS REQUIRED WHEN WORKING ON AC MAINS, & THE OPERATION OF DISMANTLING/REMOVAL OF AC PIPES & JOINTS.
- VALVES SHALL BE ARRANGED IN SUCH A MANNER TO ALLOW FOR THE NETWORK TO BE MANAGED TO ENSURE THAT NO MORE THAN 40 PROPERTIES LOSE WATER FROM A BURST ON THE SYSTEM AT ANY ONE TIME.



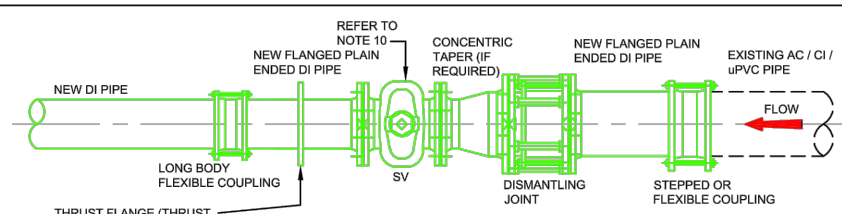
NEW PE - EXISTING AC/CI/uPVC (SAME SIZE AS NEW)



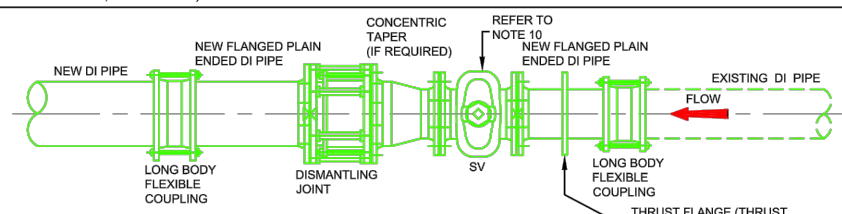
NEW PE - EXISTING AC/CI/uPVC (DIFFERENT SIZE TO NEW)



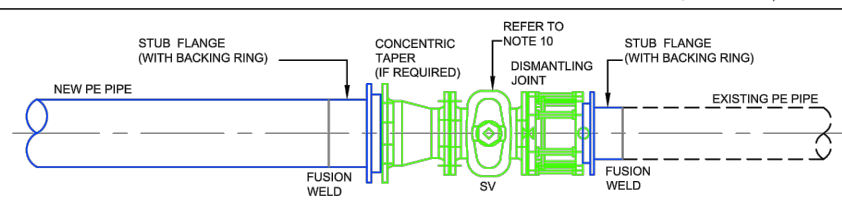
NEW PE - EXISTING DI



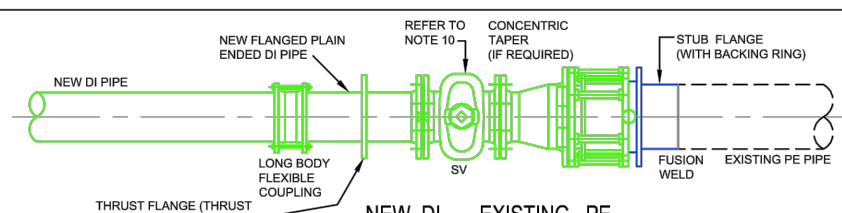
NEW DI - EXISTING AC/CI/uPVC



NEW DI - EXISTING DI



NEW PE - EXISTING PE



NEW DI - EXISTING PE

- ALL DIMENSIONS ARE IN MILLIMETRES (mm) UNLESS NOTED OTHERWISE.
- ALL BENDS, TEES, DEAD ENDS, ETC. OF PIPELINES TO BE ADEQUATELY RESTRAINED BY THRUST BLOCKS AS PER DRAWING No. STD-W-28. THRUST BLOCKS NOT SHOWN FOR CLARITY.
- BUTT FUSION WELDING AND ELECTRO FUSION JOINTING OF PIPES SHALL ONLY BE CARRIED OUT BY TRAINED OPERATIVES IN POSSESSION OF A CURRENT TRAINING CERTIFICATE, USING FULLY AUTOMATIC APPROVED JOINTING MACHINERIES IN ACCORDANCE WITH THE MANUFACTURER'S INSTRUCTIONS. THE IDENTITY OF THE PE PIPELINE MANUFACTURER SHALL BE MADE KNOWN TO IRISH WATER PRIOR TO COMMENCEMENT OF THE INSTALLATION. CERTIFICATION AND TESTING (INCLUDING INDEPENDENT THIRD PARTY CERTIFICATION) SHALL BE PROVIDED TO CONFIRM QUALITY ASSURANCE COMPLIANCE. EACH JOINT SHALL BE CLEARLY MARKED WITH THE JOINT LOGGED AUTOMATICALLY ON THE JOINTING MACHINE. A PRINTOUT OF THE JOINT DETAILS, WITH A GPS LOCATION OF EACH JOINT, SHALL BE PROVIDED AND RETAINED FOR QUALITY ASSURANCE PURPOSES.
- CONNECTING TO EXISTING MAINS IS TO BE CARRIED OUT BY IRISH WATER OR AN APPROVED IRISH WATER AGENT.
- WHEN EXISTING AC WATERMANS ARE PRESENT A SPECIFIC METHOD STATEMENT SHALL BE SUBMITTED TO IRISH WATER PRIOR TO WORKS TAKING PLACE AND SUBJECT TO WRITTEN APPROVAL. DETAILING THE PROTECTION TO BE PUT IN PLACE TO EXISTING MAINS, METHOD OF REMOVAL OF EXISTING AC, METHOD OF DISPOSAL OF EXISTING AC AND METHOD OF CONNECTION TO EXISTING AC.
- PIPE MATERIAL REFERENCES AS FOLLOWS:
AC - ASBESTOS CEMENT
DI - DUCTILE IRON
CI - CAST IRON
PE - POLYETHYLENE
uPVC - UNPLASTICISED POLY VINYL CHLORIDE
ST - STEEL
OTHER - REFERS TO ALL EXISTING PIPE MATERIALS OTHER THAN PE (TYPICALLY AC, DI, CI, uPVC & ST).
- SLUICE VALVE CHAMBERS TO BE IN ACCORDANCE WITH STD-W-14 (DI) AND STD-W-15 (PE). CHAMBERS NOT SHOWN FOR CLARITY.
- ALL THRUST FLANGES TO BE ADEQUATELY RESTRAINED BY THRUST BLOCKS AS PER DRAWING No. STD-W-28. THRUST BLOCKS NOT SHOWN FOR CLARITY.
- A HIGH LEVEL OF HEALTH & SAFETY PROCEDURES IS REQUIRED WHEN WORKING ON AC MAINS, & THE OPERATION OF DISMANTLING/REMOVAL OF AC PIPES & JOINTS.
- VALVES SHALL BE ARRANGED IN SUCH A MANNER TO ALLOW FOR THE NETWORK TO BE MANAGED TO ENSURE THAT NO MORE THAN 40 PROPERTIES LOSE WATER FROM A BURST ON THE SYSTEM AT ANY ONE TIME.

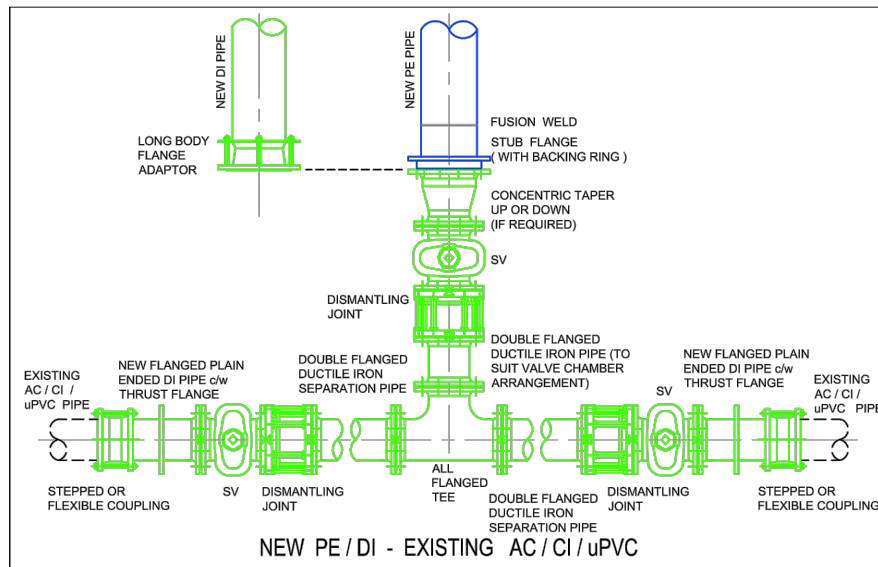
F

0	05/25	CW	Issue 0
REVISION	DATE	BY	DETAILS

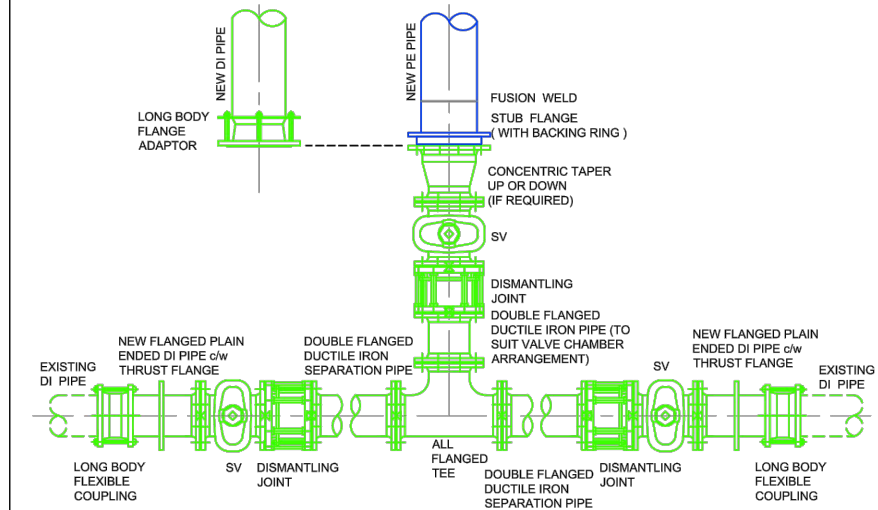
THIS DRAWING IS COPYRIGHT
Dimensions are in mm except where indicated.
Figured dimensions take precedence over scaled measurements. All dimensions to be checked on site prior to fabrication or construction. All works to be in accordance with Current Building Regulations and Codes. (Sub)Contractors are responsible for ensuring compliance with Building Regulations within their trade. Where this drawing is open to public inspection pursuant to a statutory requirement, or is on a statutory register, copying is subject to the requirements of Section 74 of the Copyright and Related Rights Act, 2000.

Drawn By CC
Chkd By CC
Approved By CC
DWG Date 19/09/25
Scale NTS
Purpose Code P03
Project 22240 - CRO - X - XXX - DR - CE - 03150
Client Rockspring Properties Ltd.
Project Baneshane, Midleton LRD
Title STD-W-04
E: info@crocon.ie Tel: (021) 431 0709

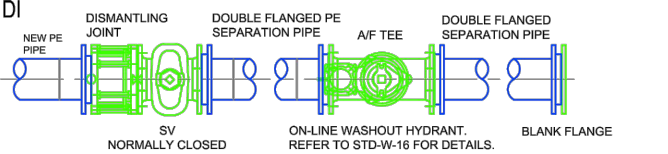
Project	Originator	Spatial Zone	Level	Info Type	Role	Number
22240 - CRO - X - XXX - DR - CE - 03150						



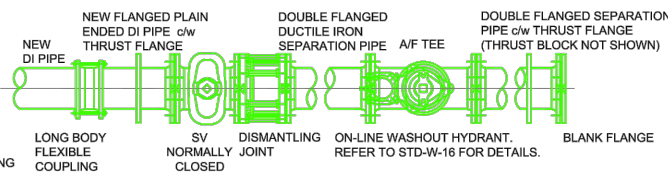
NEW PE / DI - EXISTING AC / CI / uPVC



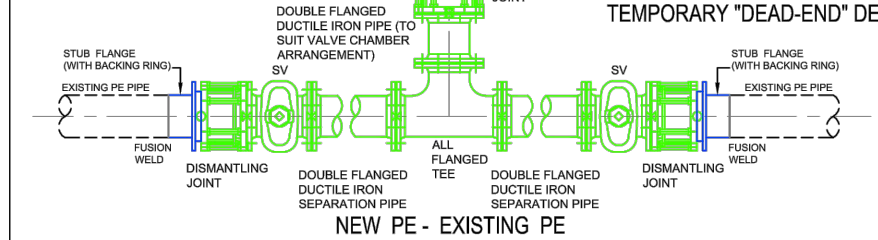
NEW PE / DI - EXISTING DI



TEMPORARY "DEAD-END" DETAIL (FOR FUTURE EXTENSION) - PE

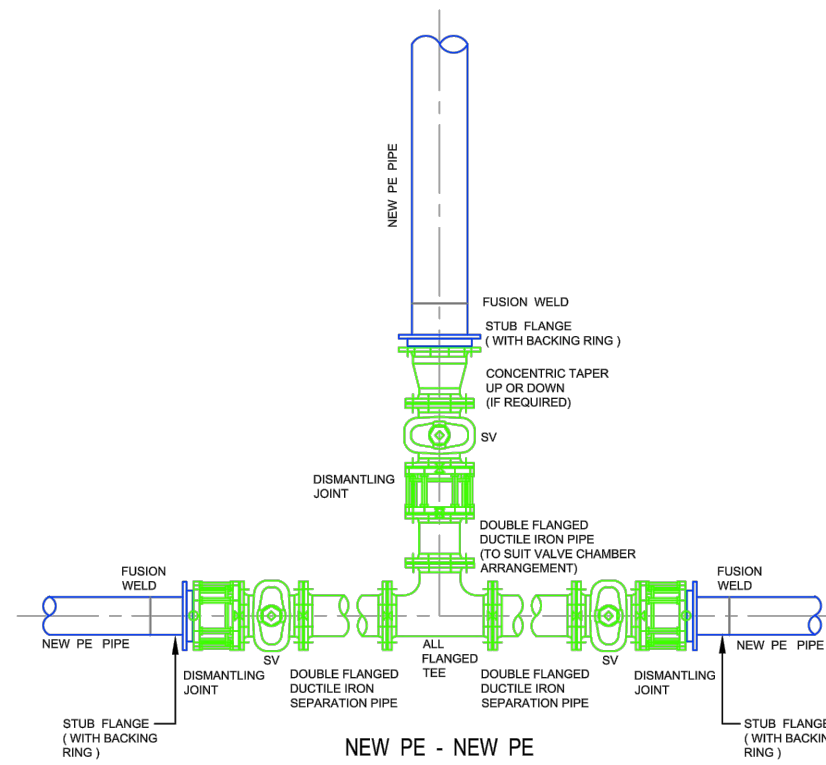


TEMPORARY "DEAD-END" DETAIL (FOR FUTURE EXTENSION) - DI



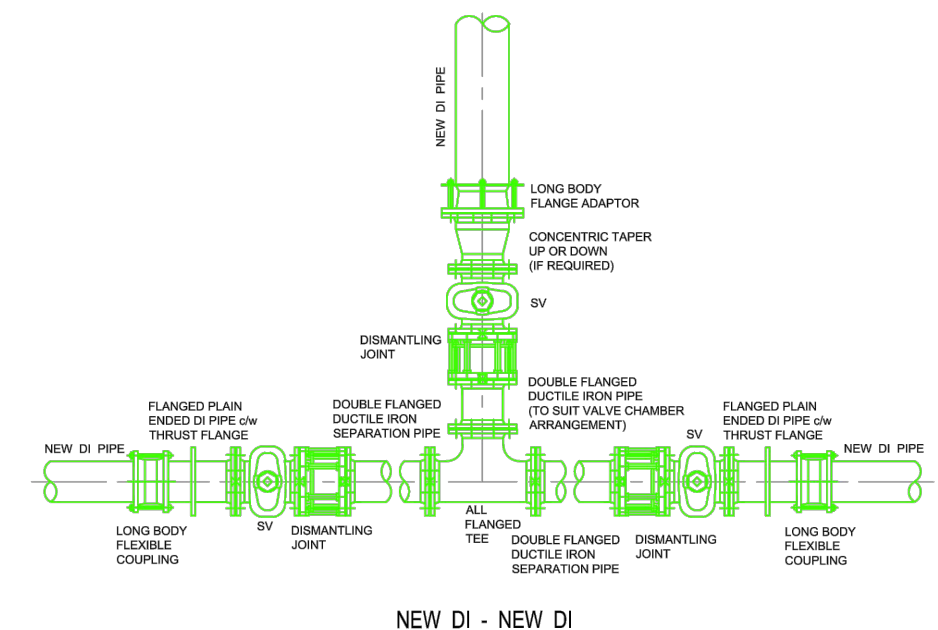
NEW PE - EXISTING PE

1. ALL DIMENSIONS ARE IN MILLIMETRES (mm) UNLESS NOTED OTHERWISE.
2. ALL BENDS, TEES, DEAD ENDS, ETC. OF PIPELINES TO BE ADEQUATELY RESTRAINED BY THRUST BLOCKS AS PER DRAWING No. STD-W-28. THRUST BLOCKS NOT SHOWN FOR CLARITY.
3. BUTT FUSION WELDING AND ELECTRO FUSION JOINTING OF PIPES SHALL ONLY BE CARRIED OUT BY TRAINED OPERATIVES IN POSSESSION OF A CURRENT TRAINING CERTIFICATE, USING FULLY AUTOMATIC APPROVED JOINTING MACHINE/RIGS IN ACCORDANCE WITH THE MANUFACTURER'S INSTRUCTIONS. THE IDENTITY OF THE PE PIPELINE MANUFACTURER SHALL BE MADE KNOWN TO IRISH WATER PRIOR TO COMMENCEMENT OF THE INSTALLATION. CERTIFICATION AND TESTING (INCLUDING INDEPENDENT THIRD PARTY CERTIFICATION) SHALL BE PROVIDED TO CONFIRM QUALITY ASSURANCE COMPLIANCE. EACH JOINT SHALL BE CLEARLY MARKED WITH THE JOINT LOGGED AUTOMATICALLY ON THE JOINTING MACHINE. A PRINTOUT OF THE JOINT DETAILS, WITH A GPS LOCATION OF EACH JOINT, SHALL BE PROVIDED AND RETAINED FOR QUALITY ASSURANCE PURPOSES.
4. CONNECTING TO EXISTING MAINS IS TO BE CARRIED OUT BY IRISH WATER OR AN APPROVED IRISH WATER AGENT.
5. WHEN EXISTING AC WATERMANS ARE PRESENT A SPECIFIC METHOD STATEMENT SHALL BE SUBMITTED TO IRISH WATER PRIOR TO WORKS TAKING PLACE AND SUBJECT TO WRITTEN APPROVAL. DETAILING THE PROTECTION TO BE PUT IN PLACE TO EXISTING MAINS, METHOD OF REMOVAL OF EXISTING AC, METHOD OF DISPOSAL OF EXISTING AC AND METHOD OF CONNECTION TO EXISTING AC.
6. PIPE MATERIAL REFERENCES AS FOLLOWS:
AC - ASBESTOS CEMENT
DI - DUCTILE IRON
CI - CAST IRON
PE - POLYETHYLENE
uPVC - UNPLASTICISED POLY VINYL CHLORIDE
ST - STEEL
OTHER - REFERS TO ALL EXISTING PIPE MATERIALS OTHER THAN PE (TYPICALLY AC, DI, CI, uPVC & ST).
7. VALVE CHAMBER TO BE IN ACCORDANCE WITH STD-W-14 (DI) AND STD-W-15 (PE), CHAMBER NOT SHOWN FOR CLARITY.
8. ALL THRUST FLANGES TO BE ADEQUATELY RESTRAINED BY THRUST BLOCKS AS PER DRAWING No. STD-W-28. THRUST BLOCKS NOT SHOWN FOR CLARITY.
9. DOUBLE FLANGED SEPARATION PIPE, UP TO 5m IN LENGTH, MAY BE REQUIRED TO ALLOW SEPARATION DISTANCE BETWEEN VALVE CHAMBERS.
10. A HIGH LEVEL OF HEALTH & SAFETY PROCEDURES IS REQUIRED WHEN WORKING ON AC MAINS, & THE OPERATION OF DISMANTLING/ REMOVAL OF AC PIPES & JOINTS.
11. VALVES SHALL BE ARRANGED IN SUCH A MANNER TO ALLOW FOR THE NETWORK TO BE MANAGED TO ENSURE THAT NO MORE THAN 40 PROPERTIES LOSE WATER FROM A BURST ON THE SYSTEM AT ANY ONE TIME.
12. UNEQUAL TEES MAY BE USED INSTEAD OF CONCENTRIC TAPERS (WHERE APPLICABLE).



NEW PE - NEW PE

1. ALL DIMENSIONS ARE IN MILLIMETRES (mm) UNLESS NOTED OTHERWISE.
2. ALL BENDS, TEES, DEAD ENDS, ETC. OF PIPELINES TO BE ADEQUATELY RESTRAINED BY THRUST BLOCKS AS PER DRAWING No. STD-W-28. THRUST BLOCKS NOT SHOWN FOR CLARITY.
3. BUTT FUSION WELDING AND ELECTRO FUSION JOINTING OF PIPES SHALL ONLY BE CARRIED OUT BY TRAINED OPERATIVES IN POSSESSION OF A CURRENT TRAINING CERTIFICATE, USING FULLY AUTOMATIC APPROVED JOINTING MACHINE/RIGS IN ACCORDANCE WITH THE MANUFACTURER'S INSTRUCTIONS. THE IDENTITY OF THE PE PIPELINE MANUFACTURER SHALL BE MADE KNOWN TO IRISH WATER PRIOR TO COMMENCEMENT OF THE INSTALLATION. CERTIFICATION AND TESTING (INCLUDING INDEPENDENT THIRD PARTY CERTIFICATION) SHALL BE PROVIDED TO CONFIRM QUALITY ASSURANCE COMPLIANCE. EACH JOINT SHALL BE CLEARLY MARKED WITH THE JOINT LOGGED AUTOMATICALLY ON THE JOINTING MACHINE. A PRINTOUT OF THE JOINT DETAILS, WITH A GPS LOCATION OF EACH JOINT, SHALL BE PROVIDED AND RETAINED FOR QUALITY ASSURANCE PURPOSES.
4. CONNECTING TO EXISTING MAINS IS TO BE CARRIED OUT BY IRISH WATER OR AN APPROVED IRISH WATER AGENT.
5. WHEN EXISTING AC WATERMANS ARE PRESENT A SPECIFIC METHOD STATEMENT SHALL BE SUBMITTED TO IRISH WATER PRIOR TO WORKS TAKING PLACE AND SUBJECT TO WRITTEN APPROVAL, DETAILING THE PROTECTION TO BE PUT IN PLACE TO EXISTING MAINS, METHOD OF REMOVAL OF EXISTING AC, METHOD OF DISPOSAL OF EXISTING AC AND METHOD OF CONNECTION TO EXISTING AC.
6. PIPE MATERIAL REFERENCES AS FOLLOWS:
AC - ASBESTOS CEMENT
DI - DUCTILE IRON
CI - CAST IRON
PE - POLYETHYLENE
uPVC - UNPLASTICISED POLY VINYL CHLORIDE
ST - STEEL
OTHER - REFERS TO ALL EXISTING PIPE MATERIALS OTHER THAN PE (TYPICALLY AC, DI, CI, uPVC & ST).
7. SLUICE VALVE CHAMBERS TO BE IN ACCORDANCE WITH STD-W-14 (DI) AND STD-W-15 (PE), CHAMBERS NOT SHOWN FOR CLARITY.
8. ALL THRUST FLANGES TO BE ADEQUATELY RESTRAINED BY THRUST BLOCKS AS PER DRAWING No. STD-W-28. THRUST BLOCKS NOT SHOWN FOR CLARITY.
9. DOUBLE FLANGED SEPARATION PIPE, UP TO 5m IN LENGTH, MAY BE REQUIRED TO ALLOW SEPARATION DISTANCE BETWEEN VALVE CHAMBERS.
10. VALVES SHALL BE ARRANGED IN SUCH A MANNER TO ALLOW FOR NETWORK TO BE MANAGED TO ENSURE THAT NO MORE THAN 40 PROPERTIES LOSE WATER FROM A BURST ON THE SYSTEM AT ANY ONE TIME.
11. UNEQUAL TEES MAY BE USED INSTEAD OF CONCENTRIC TAPERS (WHERE APPLICABLE).



NEW DI - NEW DI

0	05/25	CW	Issue 0
REVISION	DATE	BY	DETAILS

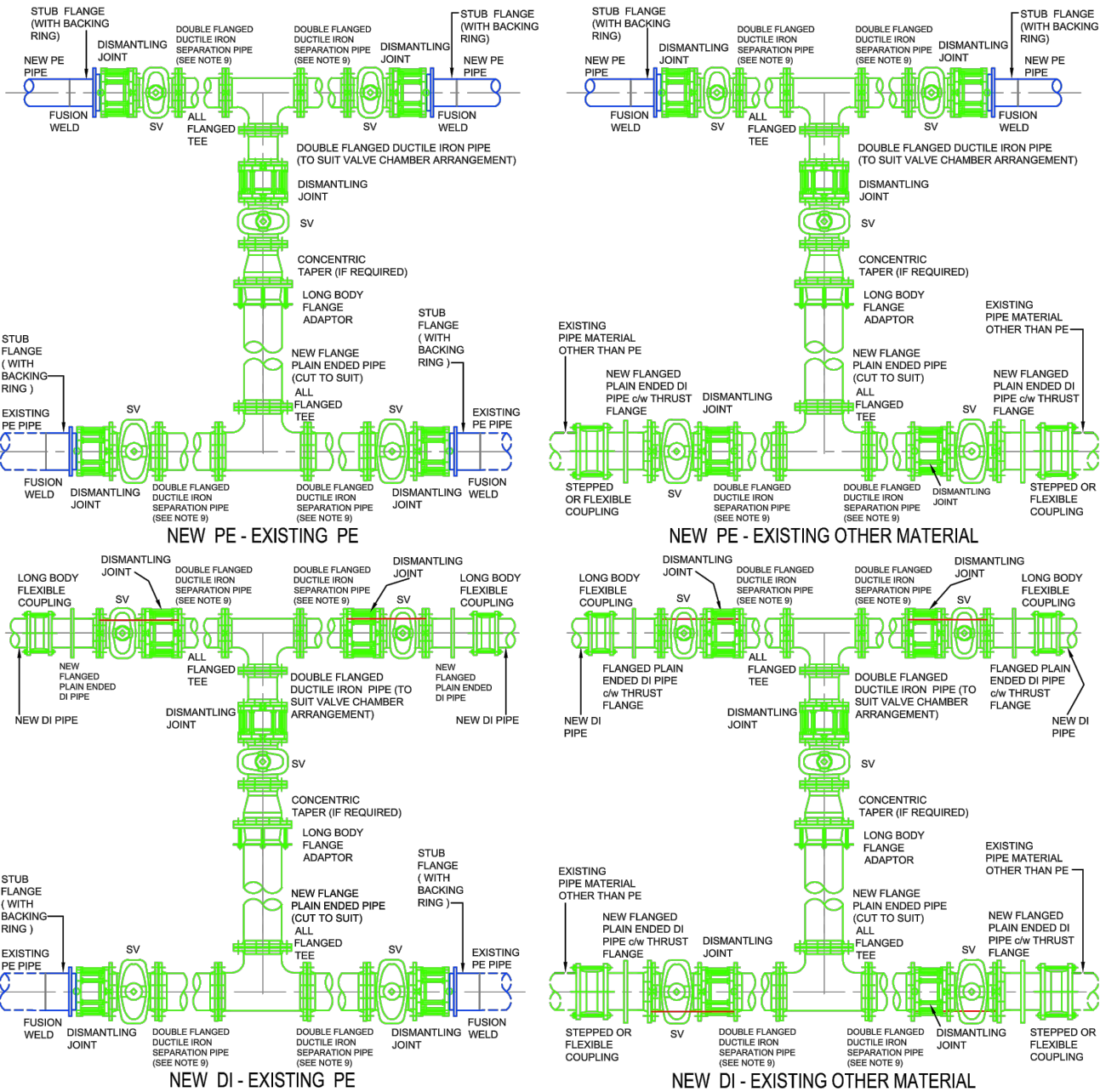
THIS DRAWING IS COPYRIGHT
Dimensions are in mm except where indicated
Figured dimensions take precedence over scaled measurements. All dimensions to be checked on site prior to fabrication or construction. All works to be in accordance with Current Building Regulations and Codes. (Sub)Contractors are responsible for ensuring compliance with Building Regulations within their trade. Where this drawing is open to public inspection pursuant to a statutory requirement, or is on a statutory register, copying is subject to the requirements of Section 74 of the Copyright and Related Rights Act, 2000

Drawn By CC
Chkd By CC
Approved By CC
DWG Date 19/09/25
Scale NTS
Purpose Code P03
Acceptance Code S
Rev 0
Stage Planning

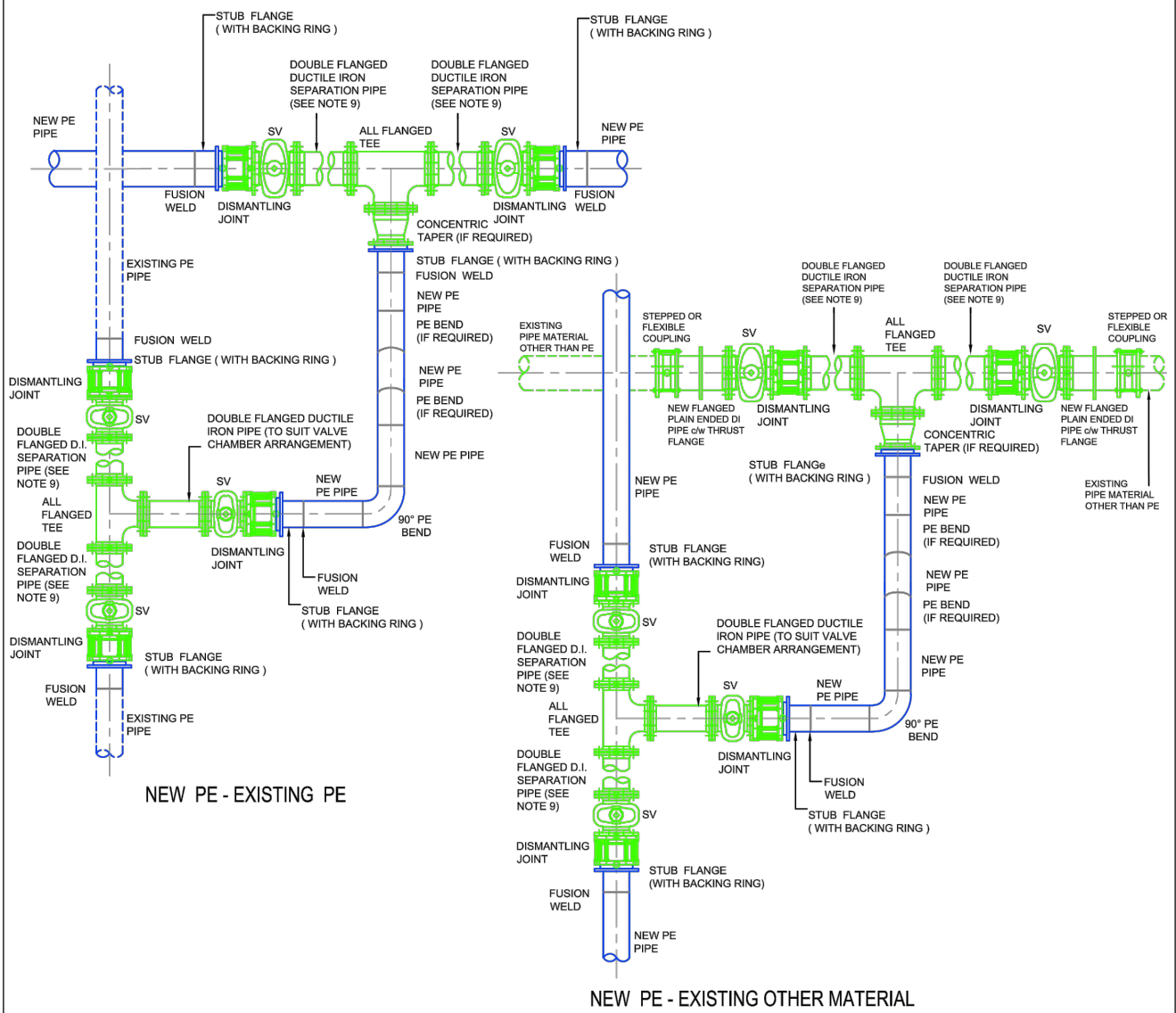
CroCon Engineers Ltd.
Consulting Engineers
Unit 1, Building 6500, Avenue 6000,
Cork Airport Business Park, Cork
E: info@crocon.ie Tel: (021) 431 0709

Project	Originator	Spatial Zone	Level	Info Type	Role	Number
22240 - CRO - X - XXX - DR - CE - 03151						
Client	Rockspring Properties Ltd.					
Project	Baneshane, Midleton LRD					
Title	STD-W-05 & STD-W-07					

- ALL DIMENSIONS ARE IN MILLIMETRES (mm) UNLESS NOTED OTHERWISE.
- ALL BENDS, TEES, DEAD ENDS, ETC. OF PIPELINES TO BE ADEQUATELY RESTRAINED BY THRUST BLOCKS AS PER DRAWING No. STD-W-28. THRUST BLOCKS NOT SHOWN FOR CLARITY.
- BUTT FUSION WELDING AND ELECTRO FUSION JOINTING OF PIPES SHALL ONLY BE CARRIED OUT BY TRAINED OPERATIVES IN POSSESSION OF A CURRENT TRAINING CERTIFICATE, USING FULLY AUTOMATIC APPROVED JOINTING MACHINE/RIGS IN ACCORDANCE WITH THE MANUFACTURER'S INSTRUCTIONS. THE IDENTITY OF THE PE PIPELINE MANUFACTURER SHALL BE MADE KNOWN TO IRISH WATER PRIOR TO COMMENCEMENT OF THE INSTALLATION. CERTIFICATION AND TESTING (INCLUDING INDEPENDENT THIRD PARTY CERTIFICATION) SHALL BE PROVIDED TO CONFIRM QUALITY ASSURANCE COMPLIANCE. EACH JOINT SHALL BE CLEARLY MARKED WITH THE JOINT LOGGED AUTOMATICALLY ON THE JOINTING MACHINE. A PRINTOUT OF THE JOINT DETAILS, WITH A GPS LOCATION OF EACH JOINT, SHALL BE PROVIDED AND RETAINED FOR QUALITY ASSURANCE PURPOSES.
- CONNECTING TO EXISTING MAINS IS TO BE CARRIED OUT BY IRISH WATER OR AN APPROVED IRISH WATER AGENT.
- WHEN EXISTING AC WATER MAINS ARE PRESENT A SPECIFIC METHOD STATEMENT SHALL BE SUBMITTED TO IRISH WATER PRIOR TO WORKS TAKING PLACE AND SUBJECT TO WRITTEN APPROVAL, DETAILING THE PROTECTION TO BE PUT IN PLACE TO EXISTING MAINS, METHOD OF REMOVAL OF EXISTING AC, METHOD OF DISPOSAL OF EXISTING AC AND METHOD OF CONNECTION TO EXISTING AC.
- PIPE MATERIAL REFERENCES AS FOLLOWS:
AC - ASBESTOS CEMENT
DI - DUCTILE IRON
CI - CAST IRON
PE - POLYETHYLENE
uPVC - UNPLASTICISED POLY VINYL CHLORIDE
ST - STEEL
OTHER - REFERS TO ALL EXISTING PIPE MATERIALS OTHER THAN PE (TYPICALLY AC, DI, CI, uPVC & ST)
- SLUICE VALVE CHAMBERS TO BE IN ACCORDANCE WITH STD-W-14 (DI) AND STD-W-15 (PE). CHAMBERS NOT SHOWN FOR CLARITY.
- ALL THRUST FLANGES TO BE ADEQUATELY RESTRAINED BY THRUST BLOCKS AS PER DRAWING No. STD-W-28. THRUST BLOCKS NOT SHOWN FOR CLARITY.
- DOUBLE FLANGED SEPARATION PIPE, UP TO 5m IN LENGTH, MAY BE REQUIRED TO ALLOW SEPARATION DISTANCE BETWEEN VALVE CHAMBERS.
- UNEQUAL TEES MAY BE USED INSTEAD OF CONCENTRIC TAPERS (WHERE APPLICABLE).



- ALL DIMENSIONS ARE IN MILLIMETRES (mm) UNLESS NOTED OTHERWISE.
- ALL BENDS, TEES, DEAD ENDS, ETC. OF PIPELINES TO BE ADEQUATELY RESTRAINED BY THRUST BLOCKS AS PER DRAWING No. STD-W-28. THRUST BLOCKS NOT SHOWN FOR CLARITY.
- BUTT FUSION WELDING AND ELECTRO FUSION JOINTING OF PIPES SHALL ONLY BE CARRIED OUT BY TRAINED OPERATIVES IN POSSESSION OF A CURRENT TRAINING CERTIFICATE, USING FULLY AUTOMATIC APPROVED JOINTING MACHINE/RIGS IN ACCORDANCE WITH THE MANUFACTURER'S INSTRUCTIONS. THE IDENTITY OF THE PE PIPELINE MANUFACTURER SHALL BE MADE KNOWN TO IRISH WATER PRIOR TO COMMENCEMENT OF THE INSTALLATION. CERTIFICATION AND TESTING (INCLUDING INDEPENDENT THIRD PARTY CERTIFICATION) SHALL BE PROVIDED TO CONFIRM QUALITY ASSURANCE COMPLIANCE. EACH JOINT SHALL BE CLEARLY MARKED WITH THE JOINT LOGGED AUTOMATICALLY ON THE JOINTING MACHINE. A PRINTOUT OF THE JOINT DETAILS, WITH A GPS LOCATION OF EACH JOINT, SHALL BE PROVIDED AND RETAINED FOR QUALITY ASSURANCE PURPOSES.
- CONNECTING TO EXISTING MAINS IS TO BE CARRIED OUT BY IRISH WATER OR AN APPROVED IRISH WATER AGENT.
- WHEN EXISTING AC WATER MAINS ARE PRESENT A SPECIFIC METHOD STATEMENT SHALL BE SUBMITTED TO IRISH WATER PRIOR TO WORKS TAKING PLACE AND SUBJECT TO WRITTEN APPROVAL, DETAILING THE PROTECTION TO BE PUT IN PLACE TO EXISTING MAINS, METHOD OF REMOVAL OF EXISTING AC, METHOD OF DISPOSAL OF EXISTING AC AND METHOD OF CONNECTION TO EXISTING AC.
- PIPE MATERIAL REFERENCES AS FOLLOWS:
AC - ASBESTOS CEMENT
DI - DUCTILE IRON
CI - CAST IRON
PE - POLYETHYLENE
uPVC - UNPLASTICISED POLY VINYL CHLORIDE
ST - STEEL
OTHER - REFERS TO ALL EXISTING PIPE MATERIALS OTHER THAN PE (TYPICALLY AC, DI, CI, uPVC & ST)
- SLUICE VALVE CHAMBERS TO BE IN ACCORDANCE WITH STD-W-14 (DI) AND STD-W-15 (PE). CHAMBERS NOT SHOWN FOR CLARITY.
- ALL THRUST FLANGES TO BE ADEQUATELY RESTRAINED BY THRUST BLOCKS AS PER DRAWING No. STD-W-28. THRUST BLOCKS NOT SHOWN FOR CLARITY.
- DOUBLE FLANGED SEPARATION PIPE, UP TO 5m IN LENGTH, MAY BE REQUIRED TO ALLOW SEPARATION DISTANCE BETWEEN VALVE CHAMBERS.
- UNEQUAL TEES MAY BE USED INSTEAD OF CONCENTRIC TAPERS (WHERE APPLICABLE).

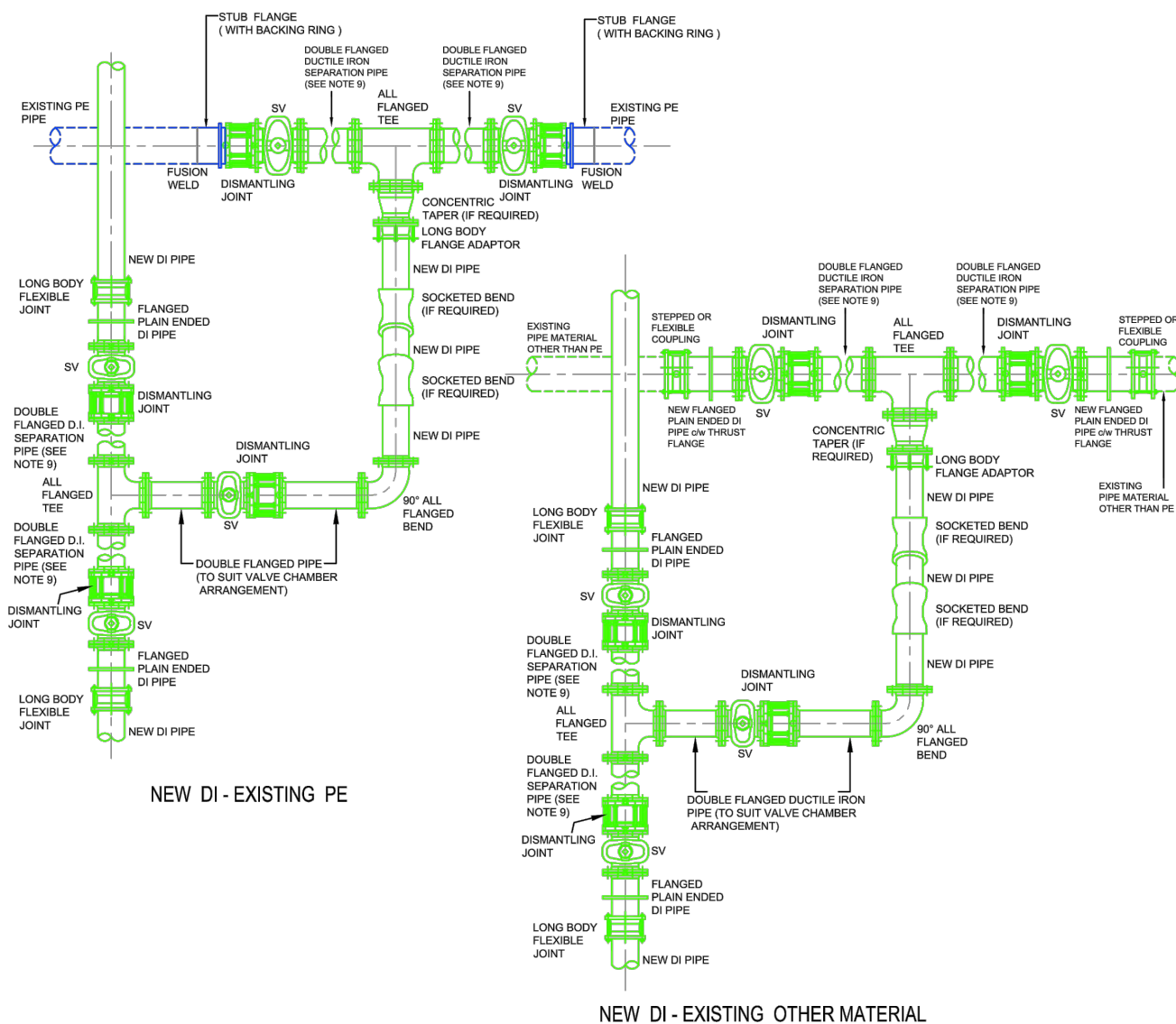


THIS DRAWING IS COPYRIGHT
Dimensions are in mm except where indicated. Figured dimensions take precedence over scaled measurements. All dimensions to be checked on site prior to fabrication or construction. All works to be in accordance with Current Building Regulations and Codes. (Sub)Contractors are responsible for ensuring compliance with Building Regulations within their trade. Where this drawing is open to public inspection pursuant to a statutory requirement, or is on a statutory register, copying is subject to the requirements of Section 74 of the Copyright and Related Rights Act, 2000.

Drawn By CC	Chkd By CC	Approved By CC	DWG Date 19/09/25	Scale NTS	Purpose Code P03	Acceptance Code S	Rev. 0	Stage Planning
CroCon Engineers Ltd. Consulting Engineers Unit 1, Building 6500, Avenue 6000, Cork Airport Business Park, Cork E: info@crocon.ie Tel: (021) 431 0709			Project 22240 - CRO - X - XXX - DR - CE - 03152	Originator	Spatial Zone	Level	Info Type	Role
			Client Rockspring Properties Ltd.	Project Baneshane, Midleton LRD	Title STD-W-08 & STD-W-09			

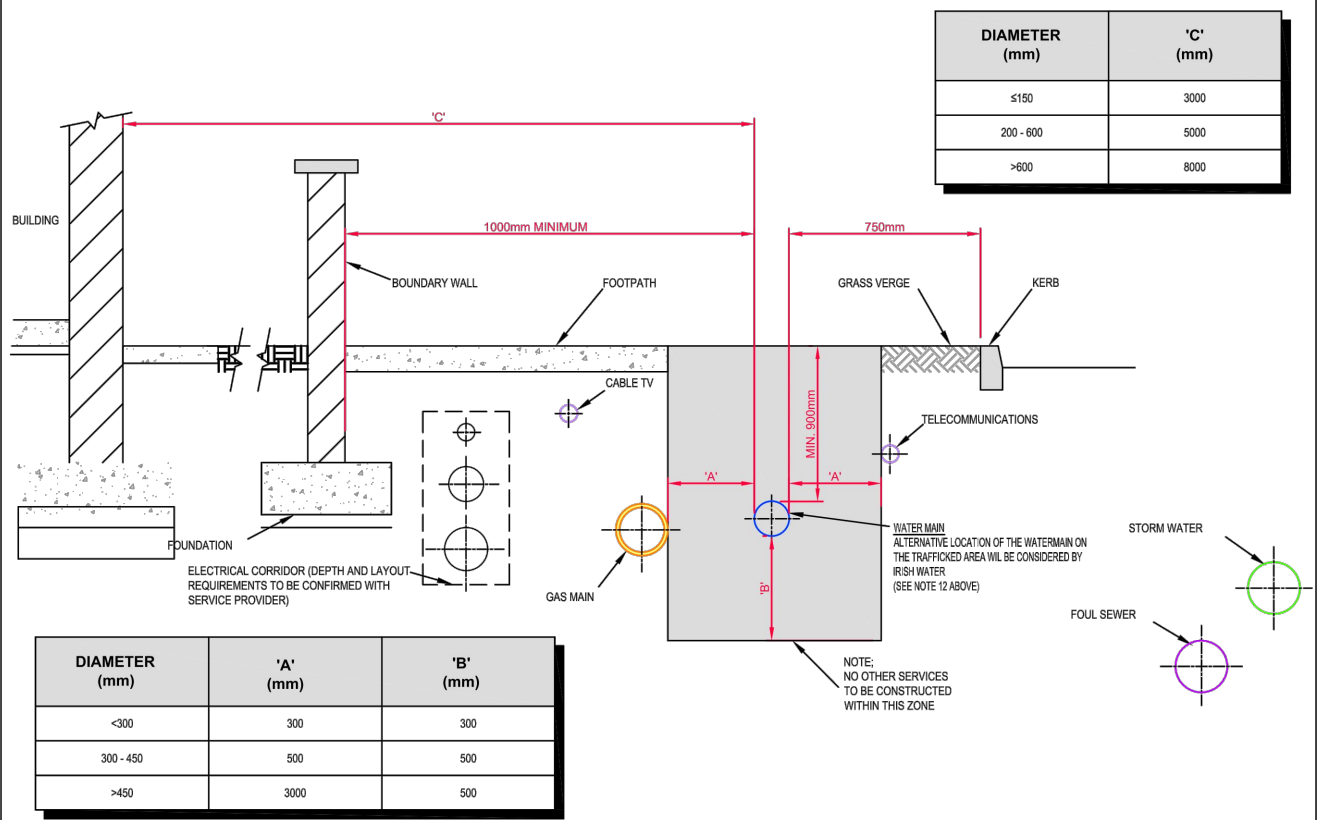
REVISION	DATE	BY	DETAILS
0	05/25	CW	Issue 0

- ALL DIMENSIONS ARE IN MILLIMETRES (mm) UNLESS NOTED OTHERWISE.
- ALL BENDS, TEES, DEAD ENDS, ETC. OF PIPELINES TO BE ADEQUATELY RESTRAINED BY THRUST BLOCKS AS PER DRAWING No. STD-W-28. THRUST BLOCKS NOT SHOWN FOR CLARITY.
- BUTT FUSION WELDING AND ELECTRO FUSION JOINTING OF PIPES SHALL ONLY BE CARRIED OUT BY TRAINED OPERATIVES IN POSSESSION OF A CURRENT TRAINING CERTIFICATE, USING FULLY AUTOMATIC APPROVED JOINTING MACHINERIES IN ACCORDANCE WITH THE MANUFACTURER'S INSTRUCTIONS. THE IDENTITY OF THE PE PIPELINE MANUFACTURER SHALL BE MADE KNOWN TO IRISH WATER PRIOR TO COMMENCEMENT OF THE INSTALLATION. CERTIFICATION AND TESTING (INCLUDING INDEPENDENT THIRD PARTY CERTIFICATION) SHALL BE PROVIDED TO CONFIRM QUALITY ASSURANCE COMPLIANCE. EACH JOINT SHALL BE CLEARLY MARKED WITH THE JOINT LOGGED AUTOMATICALLY ON THE JOINTING MACHINE. A PRINTOUT OF THE JOINT DETAILS, WITH A GPS LOCATION OF EACH JOINT, SHALL BE PROVIDED AND RETAINED FOR QUALITY ASSURANCE PURPOSES.
- CONNECTING TO EXISTING MAINS IS TO BE CARRIED OUT BY IRISH WATER OR AN APPROVED IRISH WATER AGENT.
- WHEN EXISTING AC WATERMANS ARE PRESENT A SPECIFIC METHOD STATEMENT SHALL BE SUBMITTED TO IRISH WATER PRIOR TO WORKS TAKING PLACE AND SUBJECT TO WRITTEN APPROVAL. DETAILING THE PROTECTION TO BE PUT IN PLACE TO EXISTING MAINS, METHOD OF REMOVAL OF EXISTING AC, METHOD OF DISPOSAL OF EXISTING AC AND METHOD OF CONNECTION TO EXISTING AC.
- PIPE MATERIAL REFERENCES AS FOLLOWS:
AC - ASBESTOS CEMENT
DI - DUCTILE IRON
CI - CAST IRON
PE - POLYETHYLENE
uPVC - UNPLASTICISED POLY VINYL CHLORIDE
ST - STEEL
OTHER - REFERS TO ALL EXISTING PIPE MATERIALS OTHER THAN PE (TYPICALLY AC, DI, CI, uPVC & ST)
- SLUICE VALVE CHAMBERS TO BE IN ACCORDANCE WITH STD-W-14 (DI) AND STD-W-15 (PE), CHAMBERS NOT SHOWN FOR CLARITY.
- ALL THRUST FLANGES TO BE ADEQUATELY RESTRAINED BY THRUST BLOCKS AS PER DRAWING No. STD-W-28. THRUST BLOCKS NOT SHOWN FOR CLARITY.
- DOUBLE FLANGED SEPARATION PIPE, UP TO 5m IN LENGTH, MAY BE REQUIRED TO ALLOW SEPARATION DISTANCE BETWEEN VALVE CHAMBERS.
- UNEQUAL TEES MAY BE USED INSTEAD OF CONCENTRIC TAPERS (WHERE APPLICABLE).



- SEPARATION DISTANCES BETWEEN WATERMANS ASSOCIATED WITH THE WORKS FROM OTHER UTILITY PIPES AND ACCESSORIES SHALL BE IN ACCORDANCE WITH SECTION 3.6 OF THE CODE OF PRACTICE. SEPARATION DISTANCES FOR ALL NEW INSTALLATIONS FROM EXISTING IRISH WATER PIPES SHALL BE AS OUTLINED IN SECTION 3.27 OF THE CODE OF PRACTICE. THE SEPARATION DISTANCES SPECIFIED ARE MINIMUM DISTANCES.
- SPECIFIC SEPARATION CLEARANCE DISTANCES IN EXCESS OF THESE MINIMA SHALL BE PROVIDED FOR SERVICES SUCH AS GAS, ELECTRICITY, FIBRE-OPTIC OR OIL FILLED CABLES AS THE CASE MAY BE. THE PARTICULAR UTILITY PROVIDERS SHALL BE CONSULTED TO DETERMINE THESE MINIMUM SEPARATION DISTANCES AND EVIDENCE OF THIS CONSULTATION, WITH THE SPECIFIED SEPARATION DISTANCES, SHALL BE PROVIDED TO IRISH WATER AT DESIGN STAGE.
- WATERMAIN (PROPOSED) SEPARATION DISTANCES**
HORIZONTAL
300mm TO DISTRIBUTION MAINS OF LESS THAN 300mm DIAMETER.
500mm TO TRUNK MAINS BETWEEN 300mm AND 450mm DIAMETER.
3m TO ARTERIAL WATER MAINS OF GREATER THAN 450mm DIAMETER.
VERTICAL
300mm TO DISTRIBUTION MAINS OF LESS THAN 300mm DIAMETER.
500mm TO TRUNK/ARTERIAL MAINS OF DIAMETER GREATER THAN 300mm.

ANY PROPOSED PIPE CROSSING SHOULD BE LOCATED MID-WAY BETWEEN THE WATER JOINTS WITH MINIMUM CLEAR DISTANCE OF 300mm AND UP TO 500mm. ALL CROSSINGS SHOULD BE AT LEAST 500mm AWAY FROM FITTINGS OR JOINTS
- WATERMAIN (EXISTING) SEPARATION DISTANCES**
HORIZONTAL
IN THE CASE OF INSTALLATIONS IN CLOSE PROXIMITY TO EXISTING WATER MAINS AND SEWERS, THE FOLLOWING MINIMUM HORIZONTAL DISTANCES SHALL BE MAINTAINED BETWEEN PIPES/DUCTS, CABINETS, POLES, MANHOLES, JUNCTION BOXES, CHAMBERS, ETC. WHERE THE DEPTH OF THE EXISTING INFRASTRUCTURE DOES NOT EXCEED 1.5m
600mm AT EITHER SIDE OF MAINS UP TO AND INCLUDING 150mm DIAMETER;
1m AT EITHER SIDE OF MAINS OF 200mm TO 250mm DIAMETER;
2m AT EITHER SIDE OF MAINS OF 300mm AND 375mm DIAMETER;
5m AT EITHER SIDE OF MAINS OF 400mm AND 450mm DIAMETER;
SPECIFIC IRISH WATER ADVISED DISTANCES FOR MAINS IN EXCESS OF 450mm:
600mm AT EITHER SIDE OF GRAVITY SEWER UP TO AND INCLUDING 225mm DIAMETER;
1m AT EITHER SIDE OF GRAVITY SEWER OF 300mm AND UP TO 450mm DIAMETER;
1.5m AT EITHER SIDE OF GRAVITY SEWERS OF 600mm DIAMETER AND GREATER;
NOTIFICATION IN WRITING IS REQUIRED SHOULD WORKS BE WITHIN THE FOLLOWING DISTANCES FROM AN EXISTING WATER MAIN OR WASTEWATER RISING MAIN WHERE THE DEPTH OF THE EXISTING INFRASTRUCTURE DOES NOT EXCEED 1.5m:-
HORIZONTAL
1m AT EITHER SIDE OF EXISTING PIPES LESS THAN 200mm DIAMETER;
2m AT EITHER SIDE OF EXISTING PIPES OF 200mm TO 350mm DIAMETER;
5m AT EITHER SIDE OF EXISTING PIPES OF 350mm OR GREATER;
WHERE DUCTS OR PIPES ARE TO BE LAID CLOSE TO AN EXISTING WATERMAIN OR SEWER IN THE OWNERSHIP OF IRISH WATER. NOTIFICATION IN WRITING SHALL BE PROVIDED A MINIMUM OF 10 DAYS AHEAD OF ADVANCEMENT OF THE WORK. THIS ALSO APPLIES WHERE THE DEPTH OF THE IRISH WATER WATERMAIN OR SEWER EXCEEDS 1.5m. IN ALL OF THESE INSTANCES, SPECIFIC WRITTEN APPROVAL WILL BE REQUIRED FROM IRISH WATER BEFORE PROCEEDING WITH THE WORK
NOTIFICATION IN WRITING IS REQUIRED SHOULD WORKS BE WITHIN 1.5m DISTANCE OF A WASTEWATER SEWER.
REQUIREMENTS SHALL ALSO APPLY TO TIAL HOLES OR SLIT TRENCHES TO LOCATE THE MAIN OR GAIN GROUND INFO DATA.
LARGER DIAMETERS >300mm DISTRIBUTION AND TRUNK MAINS, IRISH WATER MUST BE NOTIFIED AT LEAST 1 MONTH IN ADVANCE.
DEVELOPERS SHALL ALSO COMPLY WITH ANY NOTIFICATION REQUIREMENTS OF OTHER UTILITY PROVIDERS (ESB, GAS MAIN, TELECOMMUNICATION ETC).
6. DETAILED PROPOSALS, INCLUDING WORK METHOD STATEMENTS, INSURANCE CONFIRMATION AND DETAILS OF WORK COMPLETED OF A SIMILAR NATURE MUST BE SUBMITTED TO IRISH WATER FOR ITS CONSIDERATION BEFORE AGREEMENT WILL ISSUE. ALL SUCH WORKS IN THE VICINITY OF ARTERIAL WATER MAINS AND SEWERS (MAINS GREATER THAN 400mm) SHALL BE SUBJECT TO WRITTEN AGREEMENT WITH IRISH WATER BEFORE CONSTRUCTION COMMENCES ON SITE. THIS AGREEMENT SHALL ALSO INCLUDE ANY NECESSARY PROTECTION FOR WATER MAINS.
7. ANY DAMAGE SHALL BE NOTIFIED IMMEDIATELY TO IRISH WATER. THE PERSON WHO CAUSES THE DAMAGE TO A WATER MAIN OR FITTING WILL BE DEEMED TO HAVE COMMITTED AN OFFENCE UNDER SECTION 45 OF THE WATER SERVICES ACT 2007.
8. WATERMANS OF ANY SIZE SHALL NOT BE WITHIN 1m OF THE BOUNDARY TO A PREMISES
9. UNDER NO CIRCUMSTANCES WILL IRISH WATER ACCEPT WATER MAIN INSTALLATIONS UNDER STRUCTURES, EXISTING OR PROPOSED, OR IN CLOSE PROXIMITY TO ANY EXISTING STRUCTURES OR FEATURES THAT WILL INHIBIT ACCESS FOR POST INSTALLATION MAINTENANCE AND ACCESS.
10. WHERE THE DESIGN DEVIATES FROM THIS STANDARD DETAIL, THE DESIGN SHALL BE SUBJECT TO THE REVIEW OF IRISH WATER.
11. SEPARATION DISTANCES BETWEEN UTILITIES MAY BE INCREASED TO PROVIDE FOR CHAMBER & THRUST BLOCKS AT BENDS.
12. WHERE A GRASS VERGE IS NOT AVAILABLE AND A FOOTPATH IS LESS THAN 1.5m WIDE, THE WATERMAIN IS PERMITTED ON THE ROADWAY.



THIS DRAWING IS COPYRIGHT
Dimensions are in mm except where indicated. Figured dimensions take precedence over scaled measurements. All dimensions to be checked on site prior to fabrication or construction. All works to be in accordance with Current Building Regulations and Codes. (Sub)Contractors are responsible for ensuring compliance with Building Regulations within their trade. Where this drawing is open to public inspection pursuant to a statutory requirement, or is on a statutory register, copying is subject to the requirements of Section 74 of the Copyright and Related Rights Act, 2000.

Drawn By: CC
Chkd By: CC
Approved By: CC
DWG Date: 19/09/25
Scale: NTS
Purpose Code: P03
Acceptance Code: S
Rev: 0
Stage: Planning

CroCon Engineers Ltd.
Consulting Engineers
Unit 1, Building 6500, Avenue 6000,
Cork Airport Business Park, Cork
E: info@crocon.ie Tel: (021) 431 0709

Project: 22240 - CRO - X - XXX - DR - CE - 03153
Client: Rockspring Properties Ltd.
Project: Baneshane, Midleton LRD
Title: STD-W-10 & STD-W-11

REVISION	DATE	BY	DETAILS
0	05/25	CW	Issue 0

METHOD STATEMENTS:
 ALL WORKS SHALL BE CARRIED OUT IN ACCORDANCE WITH BS 5837 AND INFORMED BY NJUG VOLUME 4

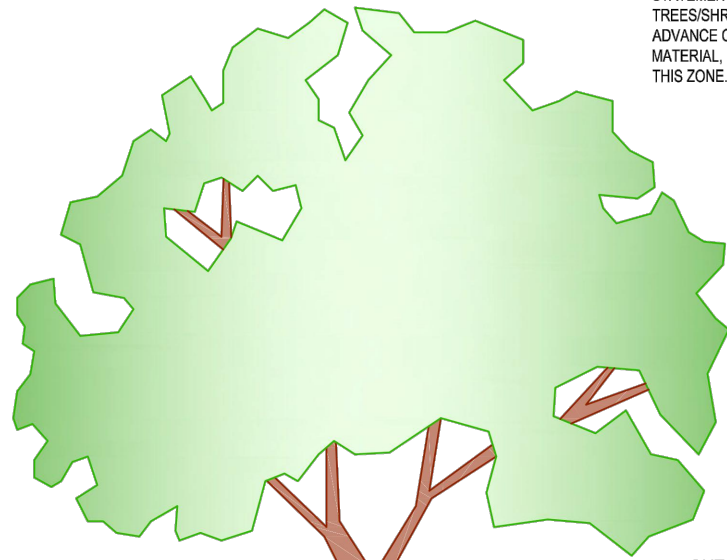
PRECAUTION AREA:
 EXCAVATIONS FOR PIPEWORK SHOULD NOT BE UNDERTAKEN WITHIN THIS AREA, UNLESS AGREED WITH IRISH WATER.

WORKS WITHIN THE PRECAUTION ZONE MUST BE SUPERVISED BY A QUALIFIED ARBORIST. WORKS SHALL BE SUBJECT OF A CLEAR METHOD STATEMENT OUTLINING ALL WORKS ADJACENT TO THE TREES/SHRUBS WHICH IS TO BE PREPARED & AGREED IN ADVANCE OF THE WORKS.

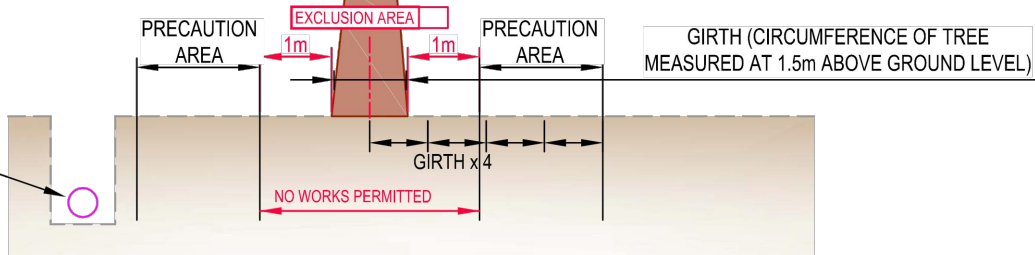
MATERIAL, PLANT & SPOIL SHALL NOT BE STORED WITHIN THIS ZONE.

EXCLUSION AREA:
 WORKS IN THIS AREA ARE TO BE AVOIDED, UNLESS ABSOLUTELY NECESSARY & AGREED WITH IRISH WATER.

EXCAVATIONS FOR PIPEWORK SHOULD NOT BE UNDERTAKEN WITHIN THIS AREA, UNLESS NECESSARY AND NO OTHER OPTIONS AVAILABLE. WORKS WITHIN THE EXCLUSION ZONE MUST BE SUPERVISED BY A QUALIFIED ARBORIST AND AGREED WITH IRISH WATER. WORKS SHALL BE SUBJECT OF AN ARBORICULTURAL IMPACT ASSESSMENT AS PER BS 5837 & A CLEAR METHOD STATEMENT OUTLINING ALL WORKS ADJACENT TO THE TREES/SHRUBS IS TO BE PREPARED AND AGREED IN ADVANCE OF THE WORKS.
 MATERIAL, PLANT & SPOIL SHALL NOT BE STORED WITHIN THIS ZONE.

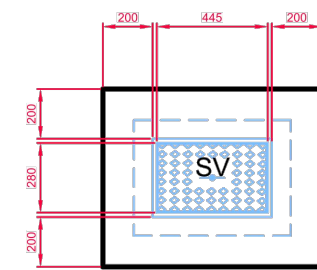


OUTSIDE RADIUS OF PRECAUTION AREA = 4 x GIRTH OF TREE

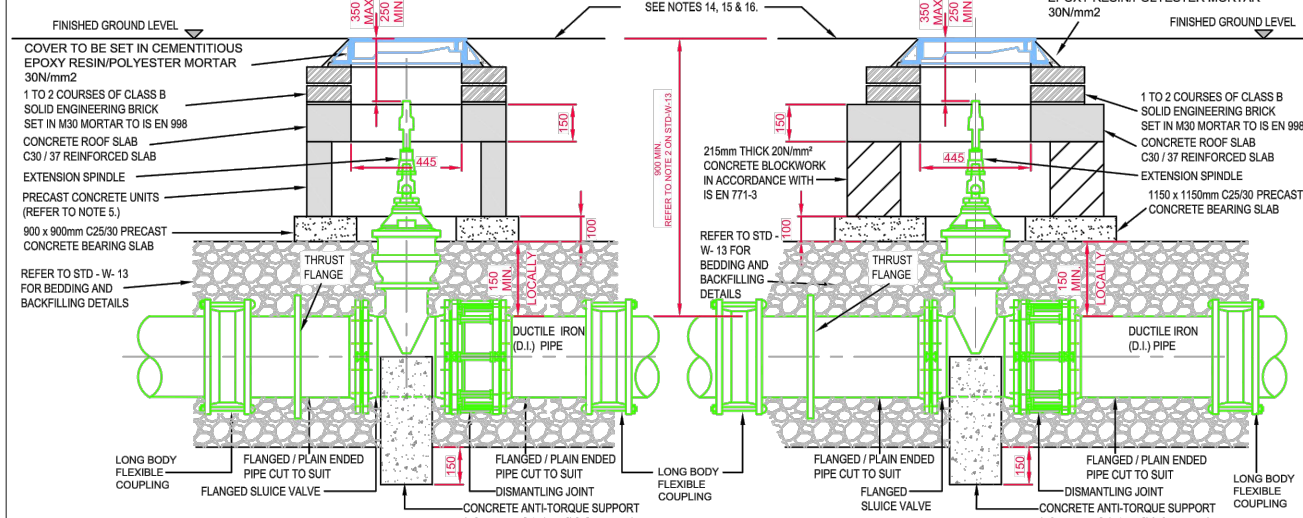


ATTENTION MEASURES TO BE TAKEN IN LINE WITH LANDSCAPING DESIGN & SPECIAL PROTECTION REQUIRED. (e.g. BY USE OF APPROPRIATE BARRIERS, PERFORMANCE JOINTS, OR USE OF POLYETHYLENE WITH WELDED JOINTS). THE LANDSCAPE DESIGN AND DETAILS OF THE PROTECTION MEASURES TO BE AGREED WITH IRISH WATER.

EXISTING PLANTING:

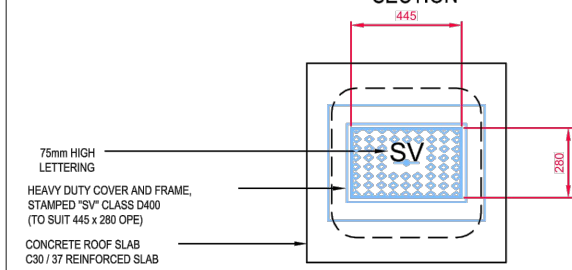


PLINTH DETAIL IN GRASS AREAS

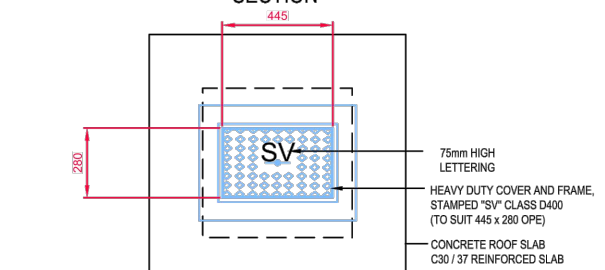


SECTION

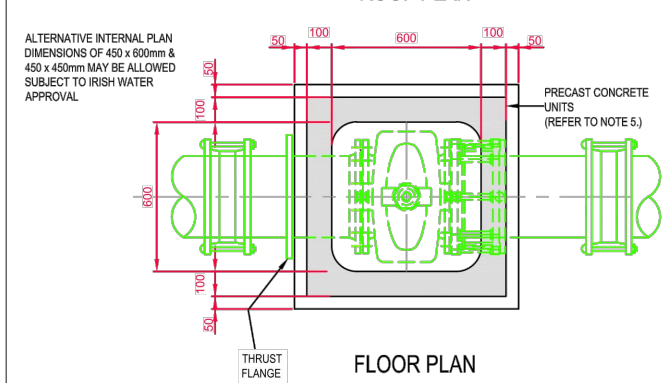
SECTION



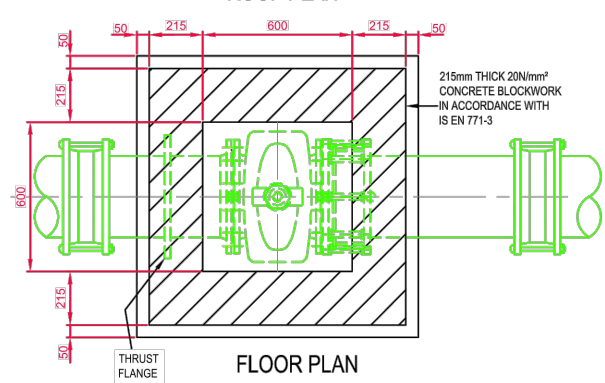
ROOF PLAN



ROOF PLAN



FLOOR PLAN
 SLUDGE VALVE CHAMBER
 (PRECAST CONCRETE CONSTRUCTION)



FLOOR PLAN
 SLUDGE VALVE CHAMBER
 (BLOCKWORK CONSTRUCTION)

- ALL DIMENSIONS IN MILLIMETRES (mm) UNLESS NOTED OTHERWISE.
- SLUDGE VALVE CHAMBERS SHALL BE COVERED WITH APPROVED HEAVY DUTY METAL COVERS TO IS 261 OR BS 5834. COVER AND FRAME SHALL BE SUITABLE FOR ROAD AND TRAFFIC CONDITIONS AND IS SUBJECT TO REVIEW BY IRISH WATER.
- SLUDGE VALVES SHALL BE RESILIENT SEATED AND SHALL COMPLY WITH BS 5163-1, BS 5163-2, IS EN 1074-1, IS EN 1074-2, OR EQUIVALENT E.U. SPECIFICATIONS.
- ALL SLUDGE VALVES SHALL BE ANTI-CLOCKWISE CLOSING.
- VALVE CHAMBER TO BE CONSTRUCTED OF PRECAST CONCRETE UNITS OR HIGH DENSITY BLOCKWORK. ALTERNATIVELY PROPRIETARY PREFABRICATED CHAMBER UNITS MAY ALSO BE USED, SUBJECT TO REVIEW BY IRISH WATER. ROOF SLABS SHALL BE DESIGNED TO CARRY ALL LIVE LOADS & DEAD LOADS, & CONSIST OF A REINFORCED CONCRETE SLAB OF IN-SITU CONCRETE, GRADE C30/37, WITH A MINIMUM THICKNESS OF 150mm. ALTERNATIVELY, PRE-CAST CONCRETE ROOFS MAY BE USED, SUBJECT TO IRISH WATER REVIEW, & COMPLIANCE WITH IS EN 1917 & IS 420. PCC CHAMBER RISER UNITS SHOULD BE INTERLOCKING WHEN STACKED TO PREVENT LATERAL MOVEMENT OF INDIVIDUAL UNITS.
- CONCRETE CHAMBERS SHALL BE SURROUNDED BY A MINIMUM OF 150mm COMPACTED CLAUSE 808 MATERIAL AS PER STD-W-13.
- DUCTILE IRON PIPES AND FITTINGS TO BE IN ACCORDANCE WITH IS EN 545.
- 200mm ALL AROUND, 100mm DEEP CONCRETE PLINTH AROUND COVERS IN GREEN AREAS.
- THRUST BLOCKS (NOT SHOWN ON DRAWING), TO BE PROVIDED AS PER STANDARD DRAWING STD-W-26 AT ALL TEES, BENDS, TAPERS, DEAD ENDS AND PIPES AT STEEP SLOPES.
- ANTI-CORROSION TAPE TO BE PROVIDED AROUND BURIED FLANGES.
- ALL CONCRETE TO BE IN ACCORDANCE WITH IS EN 206.
- ALL THRUST FLANGES TO BE ADEQUATELY RESTRAINED BY THRUST BLOCKS AS PER DRAWING No. STD-W-26. THRUST BLOCKS NOT SHOWN FOR CLARITY.
- 450 x 450mm INTERNAL DIMENSION CHAMBERS MAY BE PROVIDED SUBJECT TO REVIEW BY IW. SUCH CHAMBERS SHALL BE PROVIDED WITH GRADE 'A' HEAVY DUTY COVER & FRAME & STAMPED 'SV'. BEARING SLABS TO BE 900 x 900mm IN ALL CASES.
- ANY SPECIAL ROAD REINSTATEMENT AROUND COVER & FRAME SHALL BE TO ROAD AUTHORITY'S REQUIREMENTS.
- NEW ROAD CONSTRUCTION & SURFACE FINISH TO BE TO ROAD AUTHORITY REQUIREMENTS.
- EXISTING ROAD REINSTATEMENT TO COMPLY WITH CURRENT VERSION OF "GUIDELINES FOR MANAGING OPENINGS IN PUBLIC ROADS" BY THE DEPT. OF TRANSPORT, TOURISM & SPORT, OR TRANSPORT INFRASTRUCTURE IRELAND REQUIREMENTS.

<p>THIS DRAWING IS COPYRIGHT Dimensions are in mm except where indicated. Figured dimensions take precedence over scaled measurements. All dimensions to be checked on site prior to fabrication or construction. All works to be in accordance with Current Building Regulations and Codes. (Sub)Contractors are responsible for ensuring compliance with Building Regulations within their trade. Where this drawing is open to public inspection pursuant to a statutory requirement, or is on a statutory register, copying is subject to the requirements of Section 74 of the Copyright and Related Rights Act, 2000.</p>				Drawn By CC	Chkd By CC	Approved By CC	DWG Date 19/09/25	Scale NTS	Purpose Code P03	Acceptance Code S	Rev. 0	Stage Planning	
				CroCon Engineers Ltd. Consulting Engineers Unit 1, Building 6500, Avenue 6000, Cork Airport Business Park, Cork E: info@crocon.ie Tel: (021) 431 0709				Project Originator Spatial Zone Level Info Type Role Number 22240 - CRO - X - XXX - DR - CE - 03154					
0 05/25 CW Issue 0 REVISION DATE BY DETAILS				Client Bandonbridge NS, BoardRockspring Properties Ltd. of Management Project Baneshane, Midleton LRD Title STD-W-12 & STD-W-14									

A

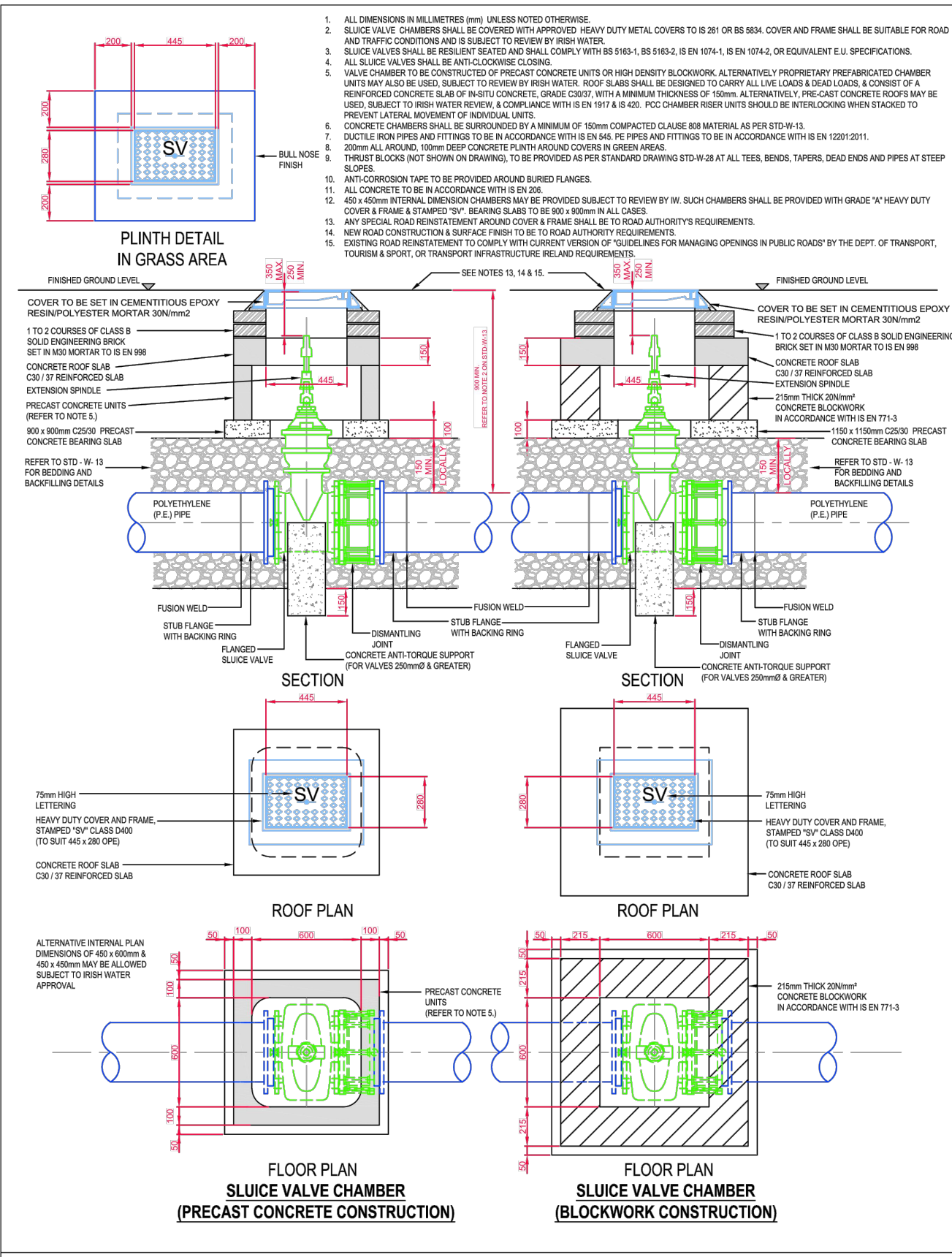
B

C

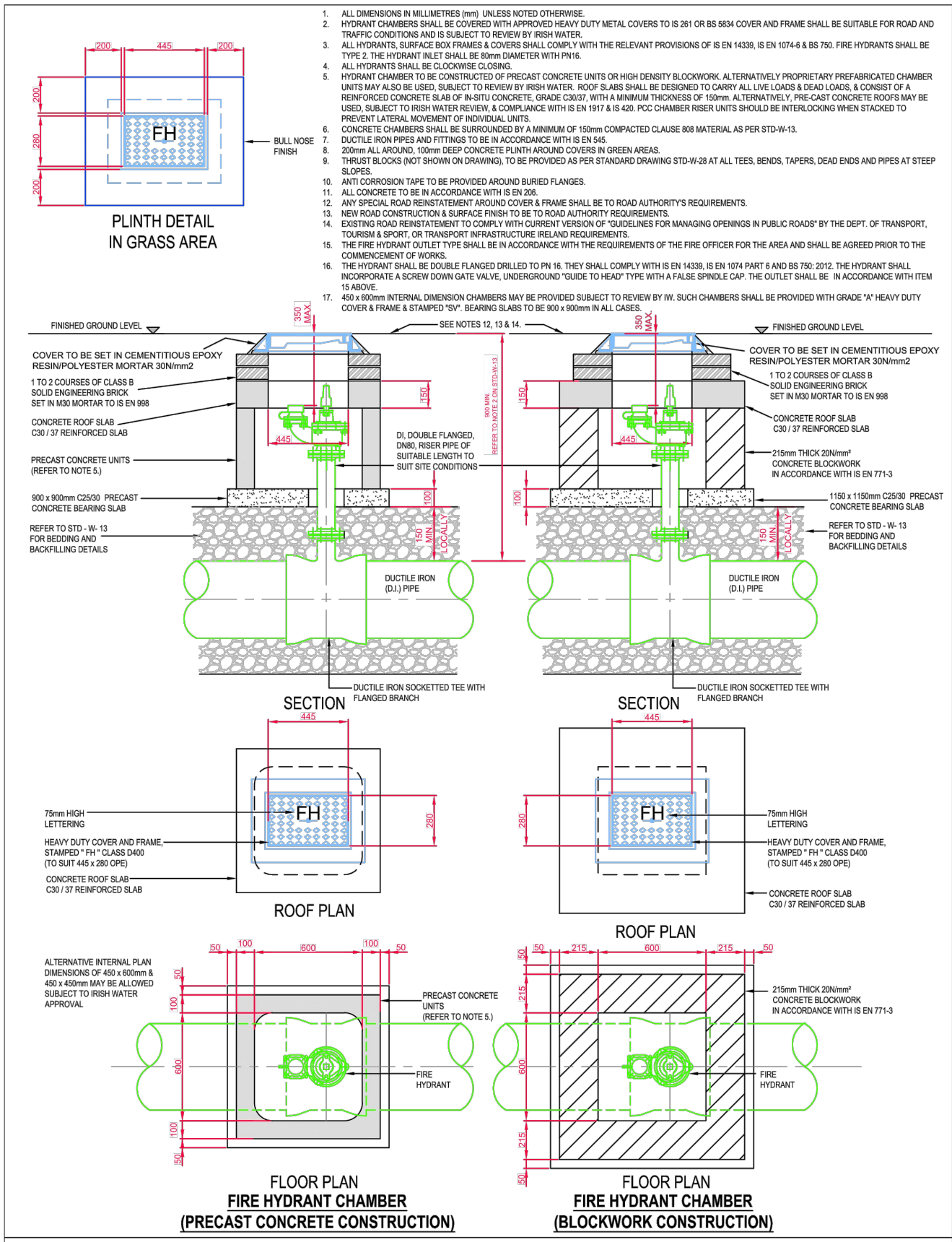
D

E

F



1. ALL DIMENSIONS IN MILLIMETRES (mm) UNLESS NOTED OTHERWISE.
2. SLUICE VALVE CHAMBERS SHALL BE COVERED WITH APPROVED HEAVY DUTY METAL COVERS TO IS 261 OR BS 8834. COVER AND FRAME SHALL BE SUITABLE FOR ROAD AND TRAFFIC CONDITIONS AND IS SUBJECT TO REVIEW BY IRISH WATER.
3. SLUICE VALVES SHALL BE RESILIENT SEATED AND SHALL COMPLY WITH BS 5163-1, BS 5163-2, IS EN 1074-1, IS EN 1074-2, OR EQUIVALENT E.U. SPECIFICATIONS.
4. ALL SLUICE VALVES SHALL BE ANTI-CLOCKWISE CLOSING.
5. VALVE CHAMBER TO BE CONSTRUCTED OF PRECAST CONCRETE UNITS OR HIGH DENSITY BLOCKWORK. ALTERNATIVELY PROPRIETARY PREFABRICATED CHAMBER UNITS MAY ALSO BE USED, SUBJECT TO REVIEW BY IRISH WATER. ROOF SLABS SHALL BE DESIGNED TO CARRY ALL LIVE LOADS & DEAD LOADS, & CONSIST OF A REINFORCED CONCRETE SLAB OF IN-SITU CONCRETE, GRADE C30/37, WITH A MINIMUM THICKNESS OF 150mm. ALTERNATIVELY, PRE-CAST CONCRETE ROOFS MAY BE USED, SUBJECT TO IRISH WATER REVIEW, & COMPLIANCE WITH IS EN 1917 & IS 420. PCC CHAMBER RISER UNITS SHOULD BE INTERLOCKING WHEN STACKED TO PREVENT LATERAL MOVEMENT OF INDIVIDUAL UNITS.
6. CONCRETE CHAMBERS SHALL BE SURROUNDED BY A MINIMUM OF 150mm COMPACTED CLAUSE 808 MATERIAL AS PER STD-W-13.
7. DUCTILE IRON PIPES AND FITTINGS TO BE IN ACCORDANCE WITH IS EN 545. PE PIPES AND FITTINGS TO BE IN ACCORDANCE WITH IS EN 12201/2011.
8. 200mm ALL AROUND, 100mm DEEP CONCRETE PLINTH AROUND COVERS IN GREEN AREAS.
9. THRUST BLOCKS (NOT SHOWN ON DRAWING), TO BE PROVIDED AS PER STANDARD DRAWING STD-W-28 AT ALL TEES, BENDS, TAPERS, DEAD ENDS AND PIPES AT STEEP SLOPES.
10. ANTI-CORROSION TAPE TO BE PROVIDED AROUND BURIED FLANGES.
11. ALL CONCRETE TO BE IN ACCORDANCE WITH IS EN 206.
12. 450 x 450mm INTERNAL DIMENSION CHAMBERS MAY BE PROVIDED SUBJECT TO REVIEW BY IW. SUCH CHAMBERS SHALL BE PROVIDED WITH GRADE "A" HEAVY DUTY COVER & FRAME & STAMPED "SV". BEARING SLABS TO BE 900 x 900mm IN ALL CASES.
13. ANY SPECIAL ROAD REINSTATEMENT AROUND COVER & FRAME SHALL BE TO ROAD AUTHORITY'S REQUIREMENTS.
14. NEW ROAD CONSTRUCTION & SURFACE FINISH TO BE TO ROAD AUTHORITY REQUIREMENTS.
15. EXISTING ROAD REINSTATEMENT TO COMPLY WITH CURRENT VERSION OF "GUIDELINES FOR MANAGING OPENINGS IN PUBLIC ROADS" BY THE DEPT. OF TRANSPORT, TOURISM & SPORT, OR TRANSPORT INFRASTRUCTURE IRELAND REQUIREMENTS.

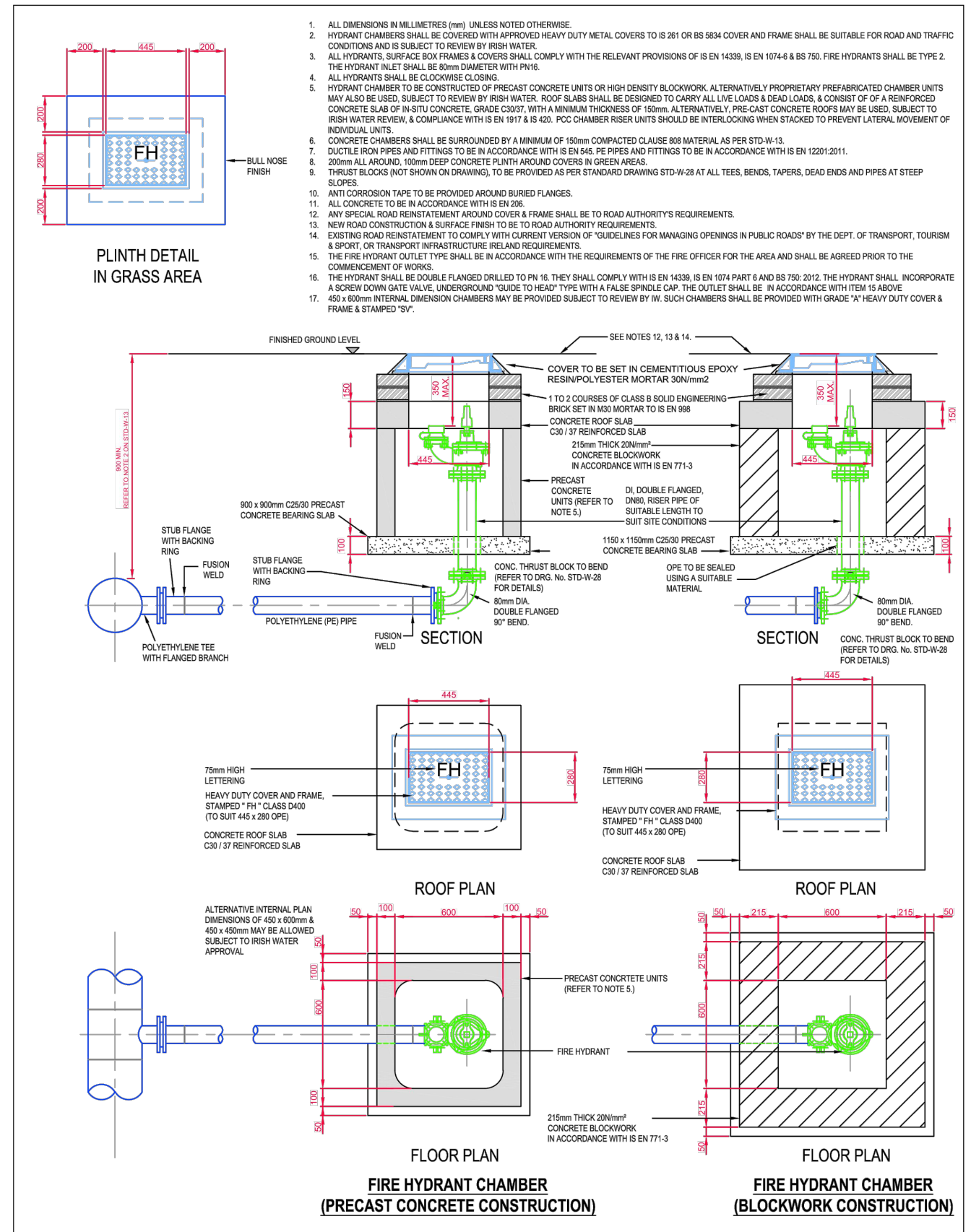
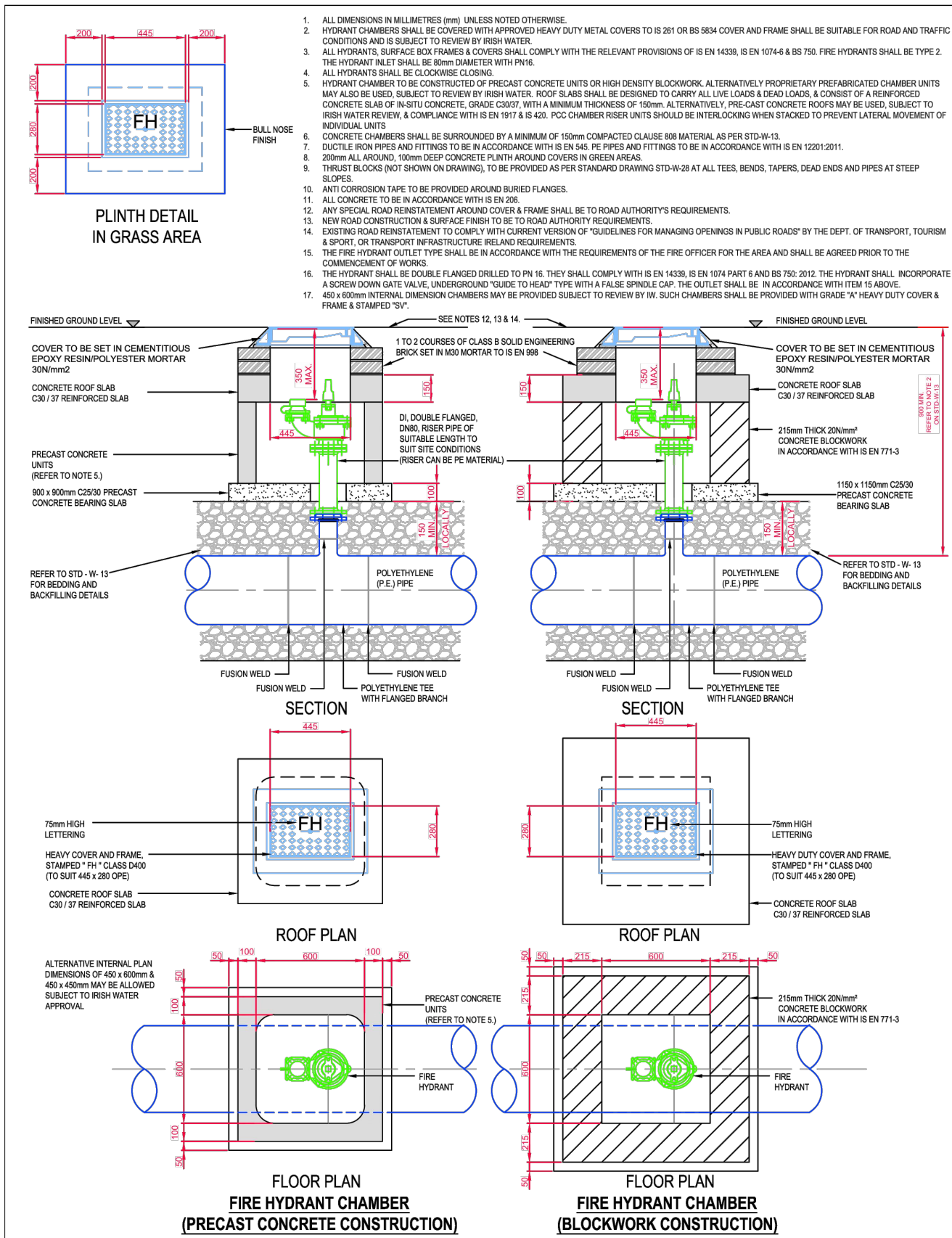


1. ALL DIMENSIONS IN MILLIMETRES (mm) UNLESS NOTED OTHERWISE.
2. HYDRANT CHAMBERS SHALL BE COVERED WITH APPROVED HEAVY DUTY METAL COVERS TO IS 261 OR BS 8834 COVER AND FRAME SHALL BE SUITABLE FOR ROAD AND TRAFFIC CONDITIONS AND IS SUBJECT TO REVIEW BY IRISH WATER.
3. ALL HYDRANTS, SURFACE BOX FRAMES & COVERS SHALL COMPLY WITH THE RELEVANT PROVISIONS OF IS EN 14339, IS EN 1074-6 & BS 750. FIRE HYDRANTS SHALL BE TYPE 2. THE HYDRANT INLET SHALL BE 80mm DIAMETER WITH PN16.
4. ALL HYDRANTS SHALL BE CLOCKWISE CLOSING.
5. HYDRANT CHAMBER TO BE CONSTRUCTED OF PRECAST CONCRETE UNITS OR HIGH DENSITY BLOCKWORK. ALTERNATIVELY PROPRIETARY PREFABRICATED CHAMBER UNITS MAY ALSO BE USED, SUBJECT TO REVIEW BY IRISH WATER. ROOF SLABS SHALL BE DESIGNED TO CARRY ALL LIVE LOADS & DEAD LOADS, & CONSIST OF A REINFORCED CONCRETE SLAB OF IN-SITU CONCRETE, GRADE C30/37, WITH A MINIMUM THICKNESS OF 150mm. ALTERNATIVELY, PRE-CAST CONCRETE ROOFS MAY BE USED, SUBJECT TO IRISH WATER REVIEW, & COMPLIANCE WITH IS EN 1917 & IS 420. PCC CHAMBER RISER UNITS SHOULD BE INTERLOCKING WHEN STACKED TO PREVENT LATERAL MOVEMENT OF INDIVIDUAL UNITS.
6. CONCRETE CHAMBERS SHALL BE SURROUNDED BY A MINIMUM OF 150mm COMPACTED CLAUSE 808 MATERIAL AS PER STD-W-13.
7. DUCTILE IRON PIPES AND FITTINGS TO BE IN ACCORDANCE WITH IS EN 545.
8. 200mm ALL AROUND, 100mm DEEP CONCRETE PLINTH AROUND COVERS IN GREEN AREAS.
9. THRUST BLOCKS (NOT SHOWN ON DRAWING), TO BE PROVIDED AS PER STANDARD DRAWING STD-W-28 AT ALL TEES, BENDS, TAPERS, DEAD ENDS AND PIPES AT STEEP SLOPES.
10. ANTI-CORROSION TAPE TO BE PROVIDED AROUND BURIED FLANGES.
11. ALL CONCRETE TO BE IN ACCORDANCE WITH IS EN 206.
12. ANY SPECIAL ROAD REINSTATEMENT AROUND COVER & FRAME SHALL BE TO ROAD AUTHORITY'S REQUIREMENTS.
13. NEW ROAD CONSTRUCTION & SURFACE FINISH TO BE TO ROAD AUTHORITY REQUIREMENTS.
14. EXISTING ROAD REINSTATEMENT TO COMPLY WITH CURRENT VERSION OF "GUIDELINES FOR MANAGING OPENINGS IN PUBLIC ROADS" BY THE DEPT. OF TRANSPORT, TOURISM & SPORT, OR TRANSPORT INFRASTRUCTURE IRELAND REQUIREMENTS.
15. THE FIRE HYDRANT OUTLET TYPE SHALL BE IN ACCORDANCE WITH THE REQUIREMENTS OF THE FIRE OFFICER FOR THE AREA AND SHALL BE AGREED PRIOR TO THE COMMENCEMENT OF WORKS.
16. THE HYDRANT SHALL BE DOUBLE FLANGED DRILLED TO PN 16. THEY SHALL COMPLY WITH IS EN 14339, IS EN 1074 PART 6 AND BS 750: 2012. THE HYDRANT SHALL INCORPORATE A SCREW DOWN GATE VALVE, UNDERGROUND "GUIDE TO HEAD" TYPE WITH A FALSE SPINDLE CAP. THE OUTLET SHALL BE IN ACCORDANCE WITH ITEM 15 ABOVE.
17. 450 x 600mm INTERNAL DIMENSION CHAMBERS MAY BE PROVIDED SUBJECT TO REVIEW BY IW. SUCH CHAMBERS SHALL BE PROVIDED WITH GRADE "A" HEAVY DUTY COVER & FRAME & STAMPED "FH". BEARING SLABS TO BE 900 x 900mm IN ALL CASES.

THIS DRAWING IS COPYRIGHT
Dimensions are in mm except where indicated
Figured dimensions take precedence over scaled
measurements. All dimensions to be checked on
site prior to fabrication or construction. All
works to be in accordance with Current Building
Regulations and Codes. (Sub)Contractors are
responsible for ensuring compliance with Building
Regulations within their trade. Where this
drawing is open to public inspection pursuant to
a statutory requirement, or is on a statutory
register, copying is subject to the requirements
of Section 74 of the Copyright and Related
Rights Act, 2000

Drawn By CC
Chkd By CC
Approved By CC
DWG Date 19/09/25
Scale NTS
Project 22240 - CRO - X - XXX - DR - CE - 03155
Client Rockspring Properties Ltd.
Project Baneshane, Midleton LRD
Title STD-W-15 & STD-W-16

0	05/25	CW	Issue 0
REVISION	DATE	BY	DETAILS



REVISION	DATE	BY	DETAILS
0	05/25	CW	Issue 0

THIS DRAWING IS COPYRIGHT
Dimensions are in mm except where indicated
Figured dimensions take precedence over scaled
measurements. All dimensions to be checked on
site prior to fabrication or construction. All
works to be in accordance with Current Building
Regulations and Codes. (Sub)Contractors are
responsible for ensuring compliance with Building
Regulations within their trade. Where this
drawing is open to public inspection pursuant to
a statutory requirement, or is on a statutory
register, copying is subject to the requirements
of Section 74 of the Copyright and Related
Rights Act, 2000

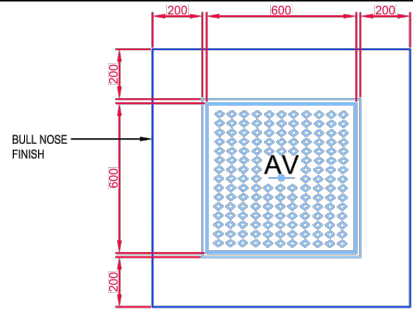
Drawn By CC
Chkd By CC
Approved By CC
DWG Date 19/09/25
Scale NTS
Purpose Code P03
Acceptance Code S
Rev. 0
Stage Planning

CroCon Engineers Ltd.
Consulting Engineers
Unit 1, Building 6500, Avenue 6000,
Cork Airport Business Park, Cork
E: info@crocon.ie Tel: (021) 431 0709

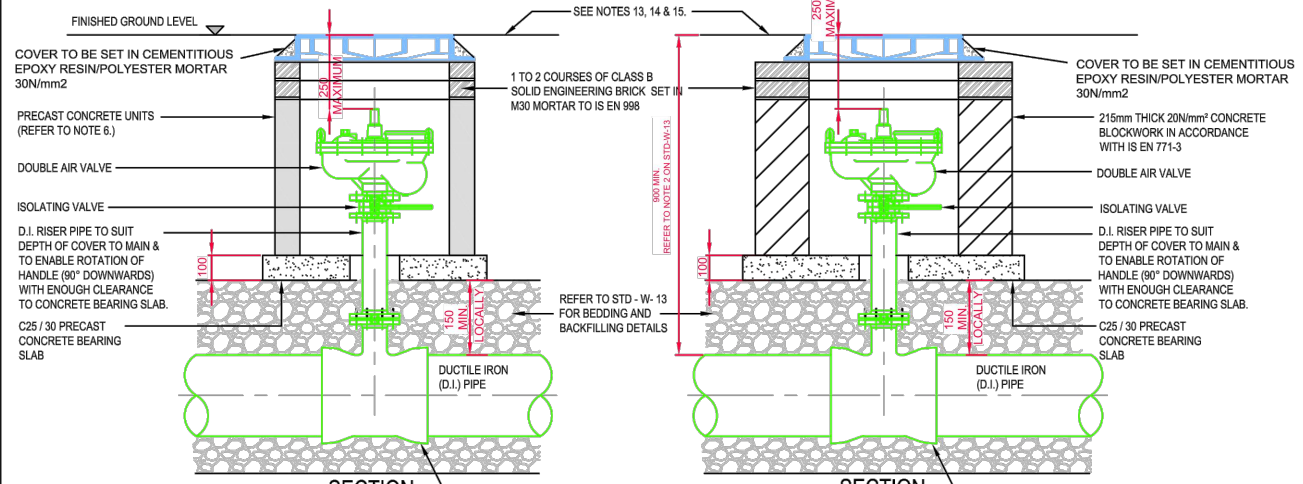
Project	Originator	Spatial Zone	Level	Info Type	Role	Number
22240	CRO	X	XXX	DR	CE	03156
Client	Rockspring Properties Ltd.					
Project	Baneshane, Midleton LRD					
Title	STD-W-18 & STD-W-19					

DIAMETER OF MAIN	UP TO 250 (mm)	250 TO 350 (mm)
DIAMETER OF BRANCH	80mm	100mm
BORE OF VALVE INLET	80mm	100mm

- ALL DIMENSIONS IN MILLIMETRES (mm) UNLESS NOTED OTHERWISE.
- AIR VALVE CHAMBERS SHALL BE COVERED WITH APPROVED VENTILATED HEAVY DUTY DUCTILE IRON COVERS TO IS EN 124 RATING D400. COVER AND FRAME SHALL BE SUITABLE FOR ROAD AND TRAFFIC CONDITIONS AND IS SUBJECT TO REVIEW BY IRISH WATER.
- AIR VALVES SHALL COMPLY WITH THE REQUIREMENTS OF IS EN 1074-4. AIR VALVES SHALL BE DOUBLE ORIFICE TYPE AND SHALL INCLUDE AN ISOLATING VALVE. THE ISOLATING VALVE SHALL BE EITHER A GATE VALVE CONFORMING TO IS EN 1074-2 & SHALL BE OF A BOLTLESS BONNET DESIGN, OR A BUTTERFLY VALVE TO IS EN 1074-2.
- SERVICE CONNECTIONS SHALL NOT BE PROVIDED WITHIN 2m OF THE AIR VALVE LOCATION.
- AIR VALVE CHAMBERS TO BE OF PRECAST CONCRETE UNITS OR HIGH DENSITY BLOCKWORK. ALTERNATIVE PROPRIETARY PREFABRICATED CHAMBER UNITS MAY ALSO BE USED, SUBJECT TO REVIEW BY IRISH WATER.
- PRECAST CONCRETE CHAMBERS SHALL BE SURROUNDED BY A MINIMUM OF 150mm COMPACTED CLAUSE 808 MATERIAL AS PER STD-W-13.
- DUCTILE IRON PIPES AND FITTINGS TO BE IN ACCORDANCE WITH IS EN 545.
- 200mm ALL AROUND, 100mm DEEP CONCRETE PLINTH AROUND COVERS IN GREEN AREAS.
- THRUST BLOCKS (NOT SHOWN ON DRAWING), TO BE PROVIDED AS PER STANDARD DRAWING STD-W-28 AT ALL TEES, BENDS, TAPERS, DEAD ENDS AND PIPES AT STEEP SLOPES.
- ANTI CORROSION TAPE TO BE PROVIDED AROUND BURIED FLANGES.
- THE LOCATION OF THE AIR VALVE SHALL BE THE SUBJECT OF PARTICULAR AGREEMENT WITH IRISH WATER TO ENSURE THAT THE RISK OF CONTAMINATION THROUGH THE VALVE IS ELIMINATED.
- ALL CONCRETE TO BE IN ACCORDANCE WITH IS EN 206.
- ANY SPECIAL ROAD REINSTATEMENT AROUND COVER & FRAME SHALL BE TO ROAD AUTHORITY'S REQUIREMENTS.
- NEW ROAD CONSTRUCTION & SURFACE FINISH TO BE TO ROAD AUTHORITY REQUIREMENTS.
- EXISTING ROAD REINSTATEMENT TO COMPLY WITH CURRENT VERSION OF "GUIDELINES FOR MANAGING OPENINGS IN PUBLIC ROADS" BY THE DEPT. OF TRANSPORT, TOURISM & SPORT, OR TRANSPORT INFRASTRUCTURE IRELAND REQUIREMENTS.

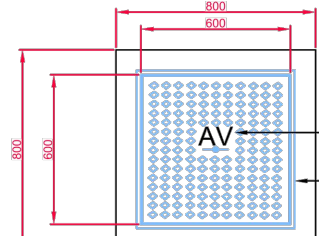


PLINTH DETAIL IN GRASS AREA

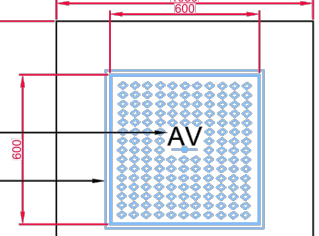


SECTION

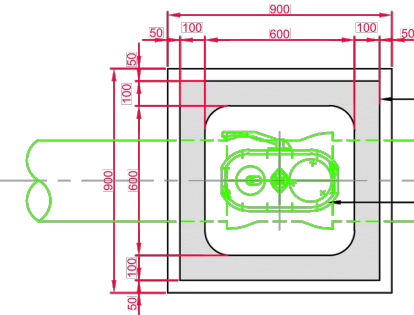
SECTION



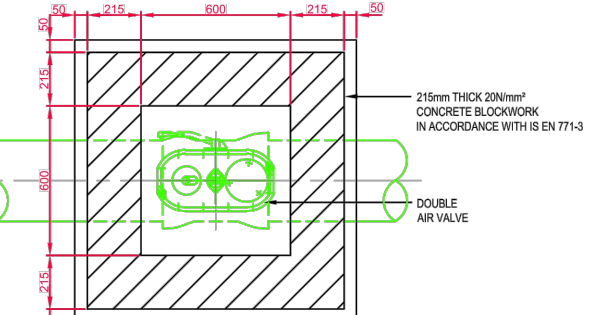
ROOF PLAN



ROOF PLAN



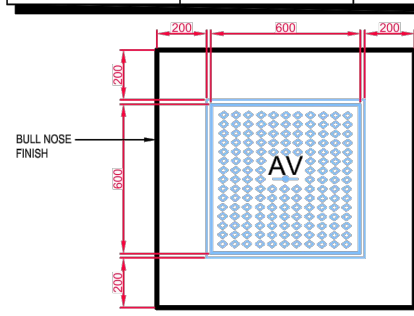
FLOOR PLAN
DOUBLE AIR VALVE
(PRECAST CONCRETE CONSTRUCTION)



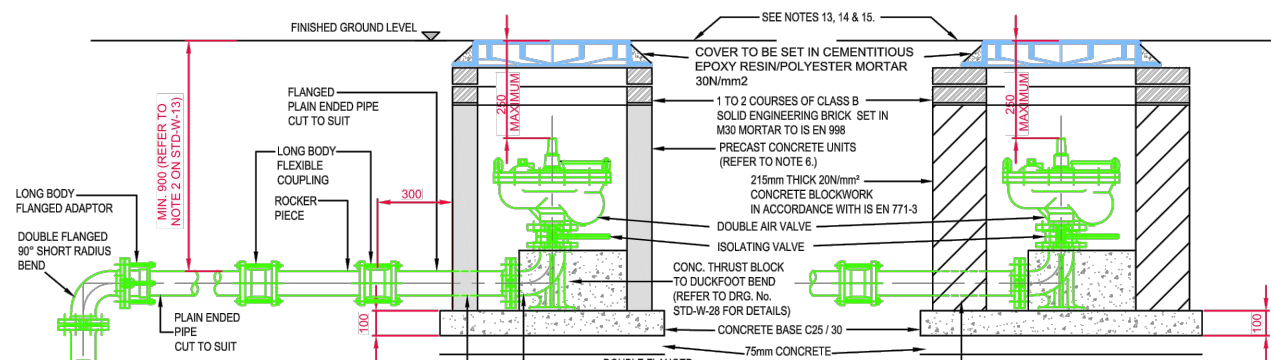
FLOOR PLAN
DOUBLE AIR VALVE
(BLOCKWORK CONSTRUCTION)

DIAMETER OF MAIN	UP TO 250 (mm)	250 TO 350 (mm)
DIAMETER OF BRANCH	80mm	100mm
BORE OF VALVE INLET	80mm	100mm

- ALL DIMENSIONS IN MILLIMETRES (mm) UNLESS NOTED OTHERWISE.
- AIR VALVE CHAMBERS SHALL BE COVERED WITH APPROVED VENTILATED HEAVY DUTY DUCTILE IRON COVERS TO IS EN 124 RATING D400. COVER AND FRAME SHALL BE SUITABLE FOR ROAD AND TRAFFIC CONDITIONS AND IS SUBJECT TO REVIEW BY IRISH WATER.
- AIR VALVES SHALL COMPLY WITH THE REQUIREMENTS OF IS EN 1074-4. AIR VALVES SHALL BE DOUBLE ORIFICE TYPE AND SHALL INCLUDE AN ISOLATING VALVE. THE ISOLATING VALVE SHALL BE EITHER A GATE VALVE CONFORMING TO IS EN 1074-2 & SHALL BE OF A BOLTLESS BONNET DESIGN, OR A BUTTERFLY VALVE TO IS EN 1074-2.
- SERVICE CONNECTIONS SHALL NOT BE PROVIDED WITHIN 2m OF THE AIR VALVE LOCATION.
- AIR VALVE CHAMBERS TO BE OF PRECAST CONCRETE UNITS OR HIGH DENSITY BLOCKWORK. ALTERNATIVE PROPRIETARY PREFABRICATED CHAMBER UNITS MAY ALSO BE USED, SUBJECT TO REVIEW BY IRISH WATER.
- PRECAST CONCRETE CHAMBERS SHALL BE SURROUNDED BY A MINIMUM OF 150mm COMPACTED CLAUSE 808 MATERIAL AS PER STD-W-13.
- DUCTILE IRON PIPES AND FITTINGS TO BE IN ACCORDANCE WITH IS EN 545.
- 200mm ALL AROUND, 100mm DEEP CONCRETE PLINTH AROUND COVERS IN GREEN AREAS.
- THRUST BLOCKS (NOT SHOWN ON DRAWING), TO BE PROVIDED AS PER STANDARD DRAWING STD-W-28 AT ALL TEES, BENDS, TAPERS, DEAD ENDS AND PIPES AT STEEP SLOPES.
- ANTI CORROSION TAPE TO BE PROVIDED AROUND BURIED FLANGES.
- THE LOCATION OF THE AIR VALVE SHALL BE THE SUBJECT OF PARTICULAR AGREEMENT WITH IRISH WATER TO ENSURE THAT THE RISK OF CONTAMINATION THROUGH THE VALVE IS ELIMINATED.
- ALL CONCRETE TO BE IN ACCORDANCE WITH IS EN 206.
- ANY SPECIAL ROAD REINSTATEMENT AROUND COVER & FRAME SHALL BE TO ROAD AUTHORITY'S REQUIREMENTS.
- NEW ROAD CONSTRUCTION & SURFACE FINISH TO BE TO ROAD AUTHORITY REQUIREMENTS.
- EXISTING ROAD REINSTATEMENT TO COMPLY WITH CURRENT VERSION OF "GUIDELINES FOR MANAGING OPENINGS IN PUBLIC ROADS" BY THE DEPT. OF TRANSPORT, TOURISM & SPORT, OR TRANSPORT INFRASTRUCTURE IRELAND REQUIREMENTS.

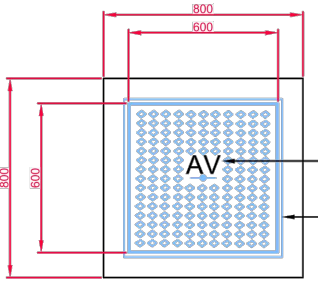


PLINTH DETAIL IN GRASS AREA

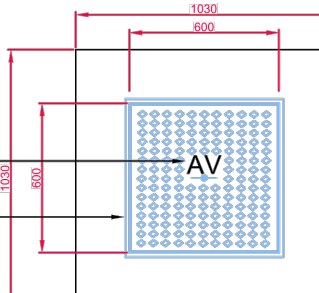


SECTION

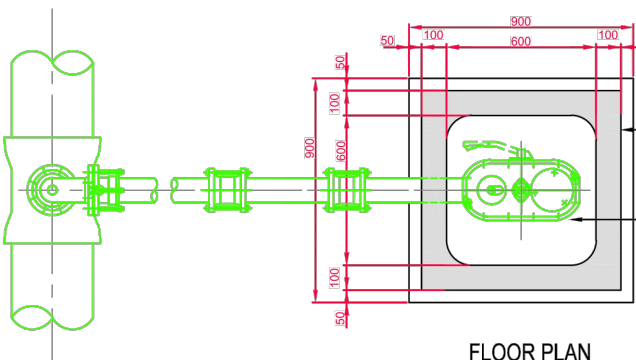
SECTION



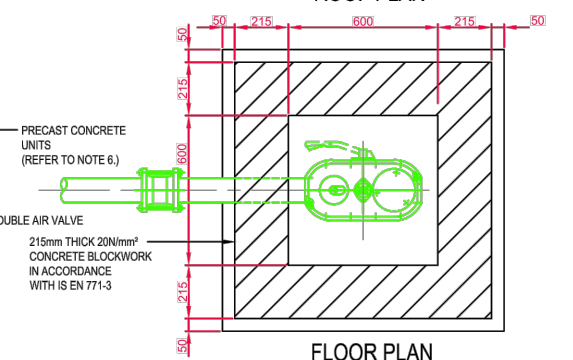
ROOF PLAN



ROOF PLAN



FLOOR PLAN
DOUBLE AIR VALVE
(PRECAST CONCRETE CONSTRUCTION)



FLOOR PLAN
DOUBLE AIR VALVE
(BLOCKWORK CONSTRUCTION)

REVISION	DATE	BY	DETAILS
0	05/25	CW	Issue 0

THIS DRAWING IS COPYRIGHT
Dimensions are in mm except where indicated.
Figured dimensions take precedence over scaled measurements. All dimensions to be checked on site prior to fabrication or construction. All works to be in accordance with Current Building Regulations and Codes. (Sub)Contractors are responsible for ensuring compliance with Building Regulations within their trade. Where this drawing is open to public inspection pursuant to a statutory requirement, or is on a statutory register, copying is subject to the requirements of Section 74 of the Copyright and Related Rights Act, 2000.

Drawn By CC
Chkd By CC
Approved By CC
DWG Date 19/09/25
Scale NTS
Purpose Code P03
Acceptance Code S
Rev. 0
Stage Planning

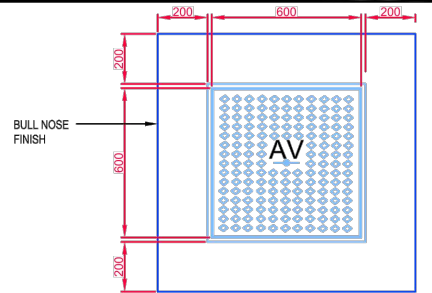
CroCon Engineers Ltd.
Consulting Engineers
Unit 1, Building 6500, Avenue 6000,
Cork Airport Business Park, Cork
E: info@crocon.ie Tel: (021) 431 0709

Project	Originator	Spatial Zone	Level	Info Type	Role	Number
22240	CRO	X	XXX	DR	CE	03157

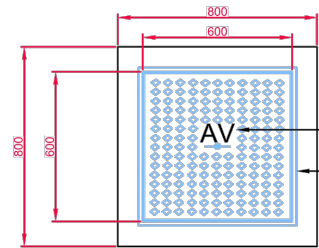
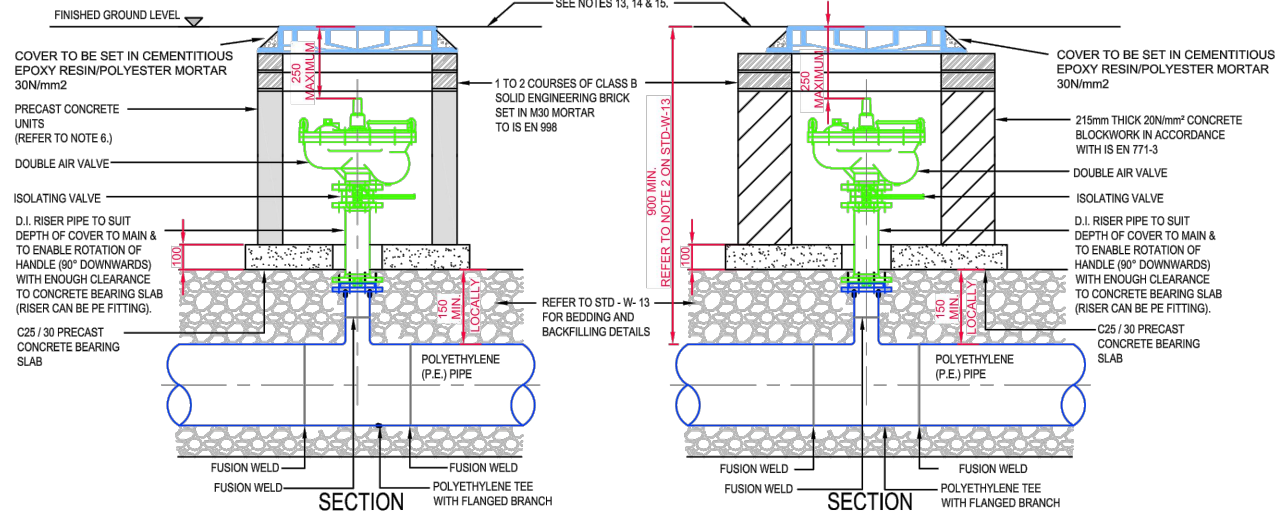
Client: Rockspring Properties Ltd.
Project: Baneshane, Midleton LRD
Title: STD-W-20 & STD-W-21

DIAMETER OF MAIN	UP TO 250 (mm)	250 TO 350 (mm)
DIAMETER OF BRANCH	80mm	100mm
BORE OF VALVE INLET	80mm	100mm

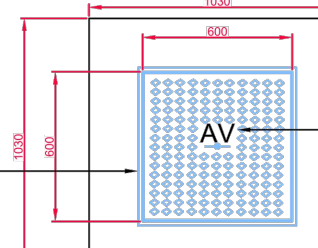
- ALL DIMENSIONS IN MILLIMETRES (mm) UNLESS NOTED OTHERWISE.
- AIR VALVE CHAMBERS SHALL BE COVERED WITH APPROVED VENTILATED HEAVY DUTY DUCTILE IRON COVERS TO IS EN 124 RATING D400. COVER AND FRAME SHALL BE SUITABLE FOR ROAD AND TRAFFIC CONDITIONS AND IS SUBJECT TO REVIEW BY IRISH WATER.
- AIR VALVES SHALL COMPLY WITH THE REQUIREMENTS OF IS EN 1074-4. AIR VALVES SHALL BE DOUBLE ORIFICE TYPE AND SHALL INCLUDE AN ISOLATING VALVE. THE ISOLATING VALVE SHALL BE EITHER A GATE VALVE CONFORMING TO IS EN 1074-2 & SHALL BE OF A BOLTLESS BONNET DESIGN, OR A BUTTERFLY VALVE TO IS EN 1074-2.
- SERVICE CONNECTIONS SHALL NOT BE PROVIDED WITHIN 2m OF THE AIR VALVE LOCATION.
- AIR VALVE CHAMBERS TO BE OF PRECAST CONCRETE UNITS OR HIGH DENSITY BLOCKWORK. ALTERNATIVE PROPRIETARY PREFABRICATED CHAMBER UNITS MAY ALSO BE USED, SUBJECT TO REVIEW BY IRISH WATER.
- PRECAST CONCRETE CHAMBERS SHALL BE SURROUNDED BY A MINIMUM OF 150mm COMPACTED CLAUSE 808 MATERIAL AS PER STD-W-13.
- DUCTILE IRON PIPES / FITTINGS AND PE PIPES / FITTINGS TO BE IN ACCORDANCE WITH IS EN 545 AND IS EN 12201:2011.
- 200mm ALL AROUND, 100mm DEEP CONCRETE PLINTH AROUND COVERS IN GREEN AREAS.
- THRUST BLOCKS (NOT SHOWN ON DRAWING), TO BE PROVIDED AS PER STANDARD DRAWING STD-W-28 AT ALL TEES, BENDS, TAPERS, DEAD ENDS AND PIPES AT STEEP SLOPES.
- ANTI CORROSION TAPE TO BE PROVIDED AROUND BURIED FLANGES.
- THE LOCATION OF THE AIR VALVE SHALL BE THE SUBJECT OF PARTICULAR AGREEMENT WITH IRISH WATER TO ENSURE THAT THE RISK OF CONTAMINATION THROUGH THE VALVE IS ELIMINATED.
- ALL CONCRETE TO BE IN ACCORDANCE WITH IS EN 206.
- ANY SPECIAL ROAD REINSTATEMENT AROUND COVER & FRAME SHALL BE TO ROAD AUTHORITY'S REQUIREMENTS.
- NEW ROAD CONSTRUCTION & SURFACE FINISH TO BE TO ROAD AUTHORITY REQUIREMENTS.
- EXISTING ROAD REINSTATEMENT TO COMPLY WITH CURRENT VERSION OF "GUIDELINES FOR MANAGING OPENINGS IN PUBLIC ROADS" BY THE DEPT. OF TRANSPORT, TOURISM & SPORT, OR TRANSPORT INFRASTRUCTURE IRELAND REQUIREMENTS.



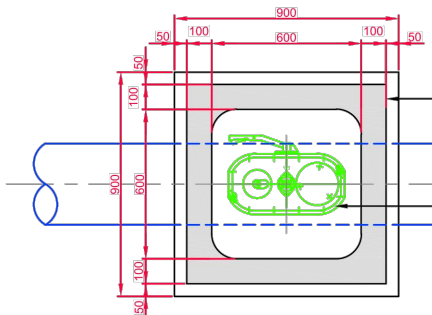
PLINTH DETAIL IN GRASS AREA



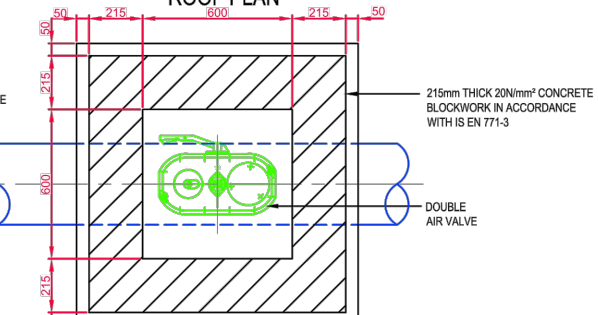
ROOF PLAN



ROOF PLAN



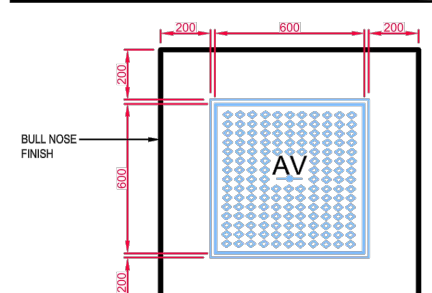
FLOOR PLAN
DOUBLE AIR VALVE
(PRECAST CONCRETE CONSTRUCTION)



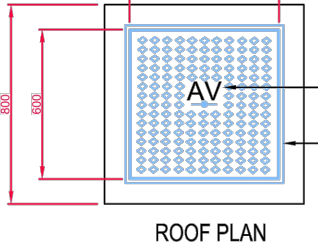
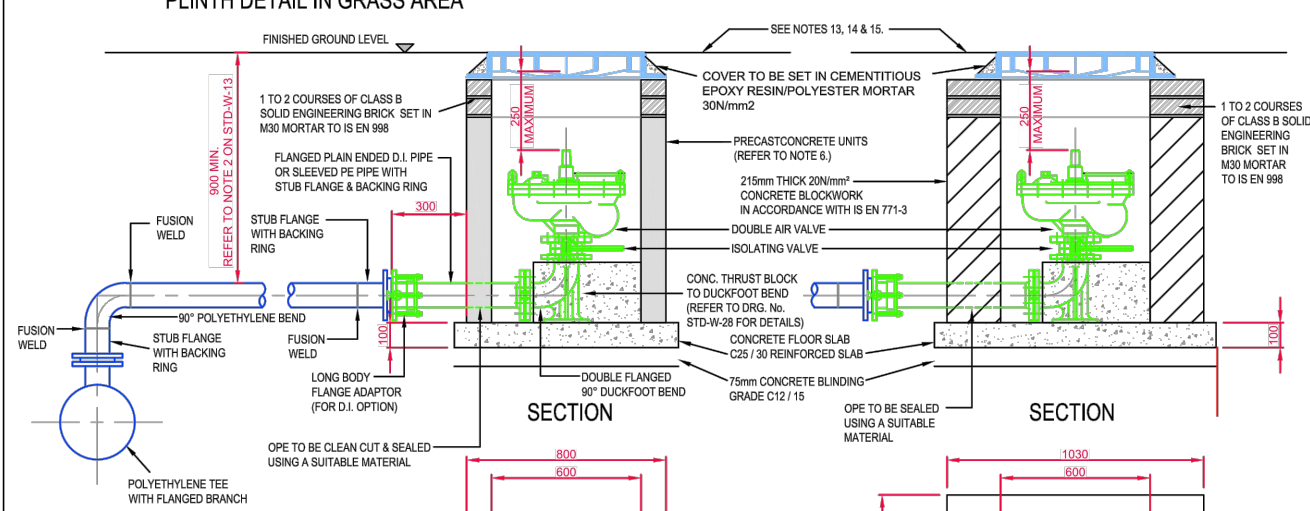
FLOOR PLAN
DOUBLE AIR VALVE
(BLOCKWORK CONSTRUCTION)

DIAMETER OF MAIN	UP TO 250 (mm)	250 TO 350 (mm)
DIAMETER OF BRANCH	80mm	100mm
BORE OF VALVE INLET	80mm	100mm

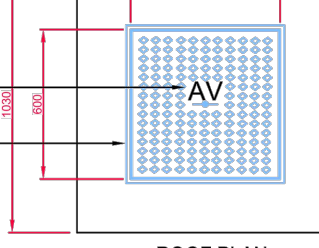
- ALL DIMENSIONS IN MILLIMETRES (mm) UNLESS NOTED OTHERWISE.
- AIR VALVE CHAMBERS SHALL BE COVERED WITH APPROVED VENTILATED HEAVY DUTY DUCTILE IRON COVERS TO IS EN 124 RATING D400. COVER AND FRAME SHALL BE SUITABLE FOR ROAD AND TRAFFIC CONDITIONS AND IS SUBJECT TO REVIEW BY IRISH WATER.
- AIR VALVES SHALL COMPLY WITH THE REQUIREMENTS OF IS EN 1074-4. AIR VALVES SHALL BE DOUBLE ORIFICE TYPE AND SHALL INCLUDE AN ISOLATING VALVE. THE ISOLATING VALVE SHALL BE EITHER A GATE VALVE CONFORMING TO IS EN 1074-2 & SHALL BE OF A BOLTLESS BONNET DESIGN, OR A BUTTERFLY VALVE TO IS EN 1074-2.
- SERVICE CONNECTIONS SHALL NOT BE PROVIDED WITHIN 2m OF THE AIR VALVE LOCATION.
- AIR VALVE CHAMBERS TO BE OF PRECAST CONCRETE UNITS OR HIGH DENSITY BLOCKWORK. ALTERNATIVE PROPRIETARY PREFABRICATED CHAMBER UNITS MAY ALSO BE USED, SUBJECT TO REVIEW BY IRISH WATER.
- PRECAST CONCRETE CHAMBERS SHALL BE SURROUNDED BY A MINIMUM OF 150mm COMPACTED CLAUSE 808 MATERIAL AS PER STD-W-13.
- DUCTILE IRON PIPES AND FITTINGS TO BE IN ACCORDANCE WITH IS EN 545. PE PIPES AND FITTINGS TO BE IN ACCORDANCE WITH IS EN 12201:2011.
- 200mm ALL AROUND, 100mm DEEP CONCRETE PLINTH AROUND COVERS IN GREEN AREAS.
- THRUST BLOCKS (NOT SHOWN ON DRAWING), TO BE PROVIDED AS PER STANDARD DRAWING STD-W-28 AT ALL TEES, BENDS, TAPERS, DEAD ENDS AND PIPES AT STEEP SLOPES.
- ANTI CORROSION TAPE TO BE PROVIDED AROUND BURIED FLANGES.
- THE LOCATION OF THE AIR VALVE SHALL BE THE SUBJECT OF PARTICULAR AGREEMENT WITH IRISH WATER TO ENSURE THAT THE RISK OF CONTAMINATION THROUGH THE VALVE IS ELIMINATED.
- ALL CONCRETE TO BE IN ACCORDANCE WITH IS EN 206.
- ANY SPECIAL ROAD REINSTATEMENT AROUND COVER & FRAME SHALL BE TO ROAD AUTHORITY'S REQUIREMENTS.
- NEW ROAD CONSTRUCTION & SURFACE FINISH TO BE TO ROAD AUTHORITY REQUIREMENTS.
- EXISTING ROAD REINSTATEMENT TO COMPLY WITH CURRENT VERSION OF "GUIDELINES FOR MANAGING OPENINGS IN PUBLIC ROADS" BY THE DEPT. OF TRANSPORT, TOURISM & SPORT, OR TRANSPORT INFRASTRUCTURE IRELAND REQUIREMENTS.



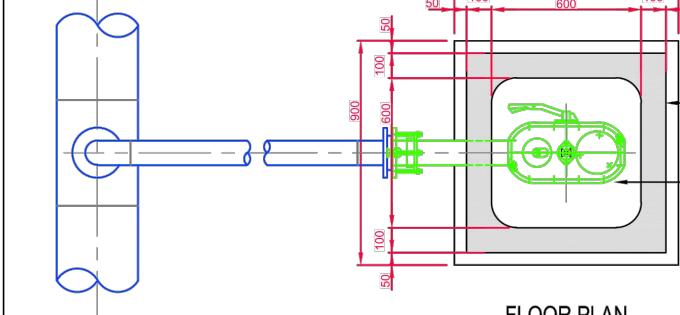
PLINTH DETAIL IN GRASS AREA



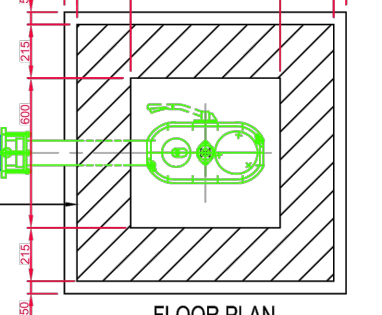
ROOF PLAN



ROOF PLAN



FLOOR PLAN
DOUBLE AIR VALVE
(PRECAST CONCRETE CONSTRUCTION)



FLOOR PLAN
DOUBLE AIR VALVE
(BLOCKWORK CONSTRUCTION)

REVISION	DATE	BY	DETAILS
0	05/25	CW	Issue 0

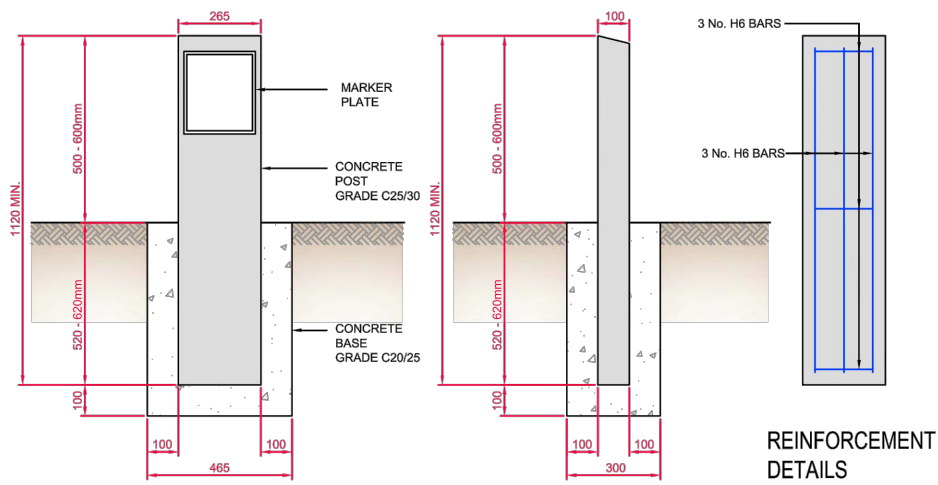
THIS DRAWING IS COPYRIGHT
Dimensions are in mm except where indicated
Figured dimensions take precedence over scaled measurements. All dimensions to be checked on site prior to fabrication or construction. All works to be in accordance with Current Building Regulations and Codes. (Sub)Contractors are responsible for ensuring compliance with Building Regulations within their trade. Where this drawing is open to public inspection pursuant to a statutory requirement, or is on a statutory register, copying is subject to the requirements of Section 74 of the Copyright and Related Rights Act, 2000

Drawn By CC
Chkd By CC
Approved By CC
DWG Date 19/09/25
Scale NTS
Purpose Code P03
Acceptance Code S
Rev. 0
Stage Planning

CroCon Engineers Ltd.
Consulting Engineers
Unit 1, Building 6500, Avenue 6000,
Cork Airport Business Park, Cork
E: info@crocon.ie Tel: (021) 431 0709

Project	Originator	Spatial Zone	Level	Info Type	Role	Number
22240	CRO	X	XXX	DR	CE	03158

Client: Rockspring Properties Ltd.
Project: Baneshane, Midleton LRD
Title: STD-W-22 & STD-W-23



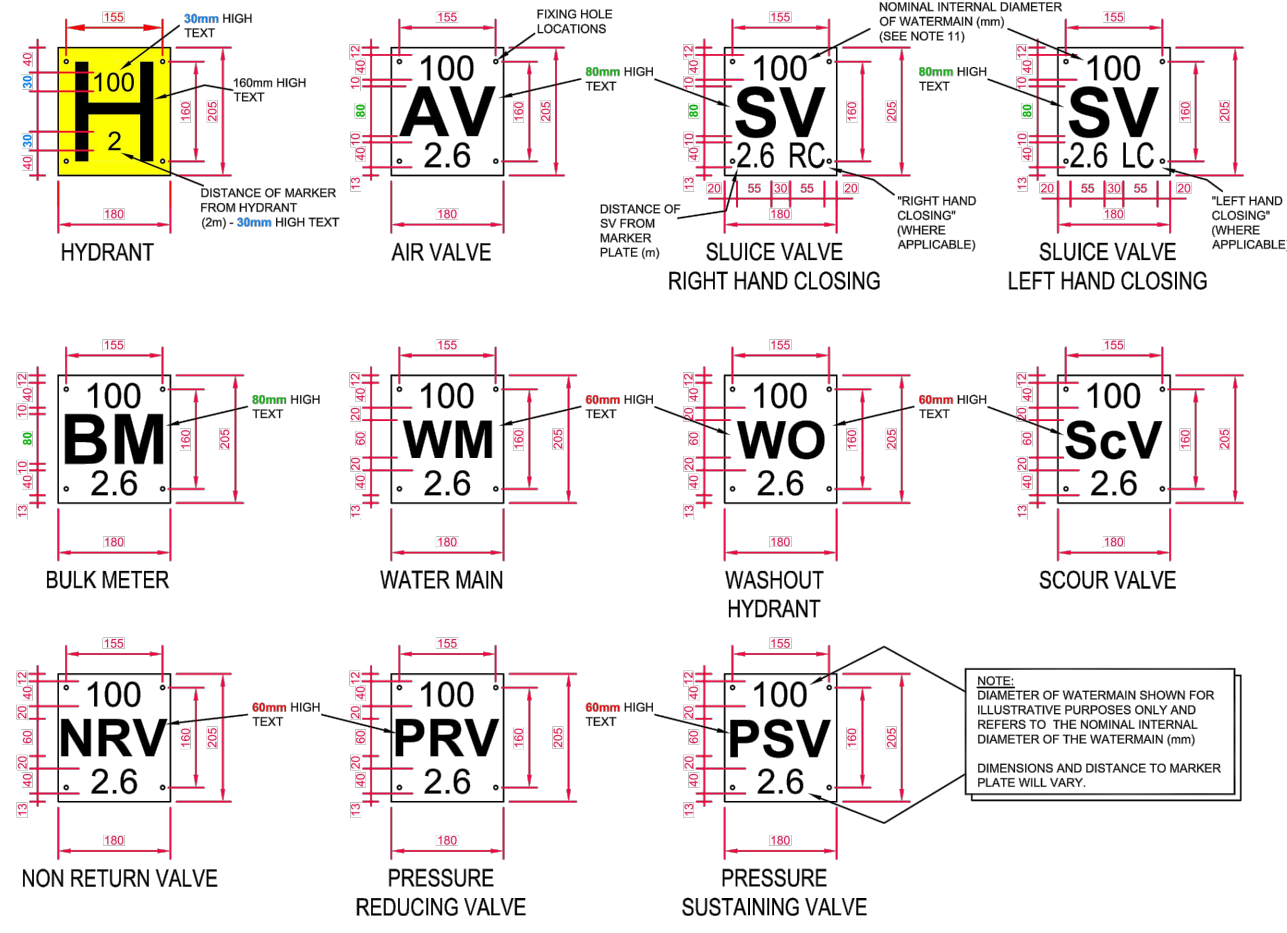
ELEVATION

SECTION

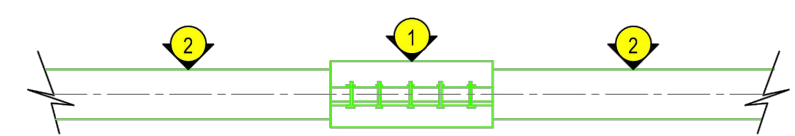
PLAN

REINFORCEMENT DETAILS

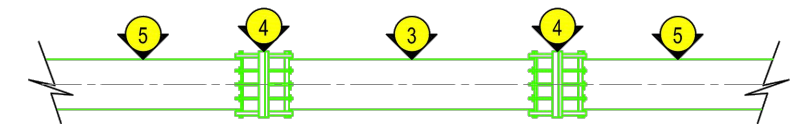
- WHERE PRACTICAL MARKER PLATES SHALL BE FIXED TO ADJACENT WALLS OR ALTERNATIVELY ATTACHED TO MARKER POSTS.
- PLATES TO BE FIXED IN POSITION USING WALL PLUGS AND STAINLESS STEEL SCREWS.
- MARKER PLATES TO BE MANUFACTURED IN ACCORDANCE WITH BS 2251.
- FOR HYDRANT PLATE ALL CHARACTERS SHOULD BE BLACK AND THE REMAINDER OF THE FRONT FACE SHOULD CONFORM TO COLOUR REFERENCE RAL 086800.
- PIPE DIAMETER ON HYDRANT PLATE TO REFER TO WATERMAIN NOT BRANCH.
- SLUICE VALVE, AIR VALVE, SCOUR VALVE, AND WASHOUT HYDRANT, ETC. SHOULD BE CAST ALUMINIUM. ALL CHARACTERS SHOULD BE BLACK ON WHITE PAINT BACKGROUND. ALTERNATIVE MATERIAL MAY BE USED SUBJECT TO ACCEPTANCE BY IRISH WATER.
- CONCRETE MARKER POST TO BE GRADE C25 / 30 AND IN ACCORDANCE WITH S EN 2062013.
- CONCRETE BASE TO BE GRADE C20/25.
- PLASTIC MARKER POSTS ARE NOT ACCEPTABLE.
- PAINTING SPECIFICATION: 2 PACK EPOXY PRIMER 40 - 60 MICRONS FOLLOWED BY 2 PACK HIGH GLOSS POLYURETHANE TOP COAT APPLIED AT 40 - 60 MICRONS
- REFERENCES TO PIPE DIAMETERS ON MARKER PLATES REFER SPECIFICALLY TO THE NOMINAL INTERNAL DIAMETER OF THE PIPE REGARDLESS OF PIPE MATERIAL.



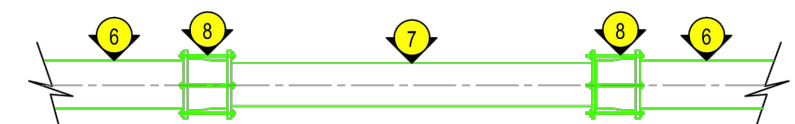
NOTE:
DIAMETER OF WATERMAIN SHOWN FOR ILLUSTRATIVE PURPOSES ONLY AND REFERS TO THE NOMINAL INTERNAL DIAMETER OF THE WATERMAIN (mm)
DIMENSIONS AND DISTANCE TO MARKER PLATE WILL VARY.



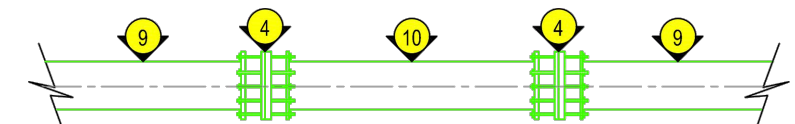
TYPE 1 REPAIR
COUPLING CLAMP FOR
DI, uPVC, ST AND CI



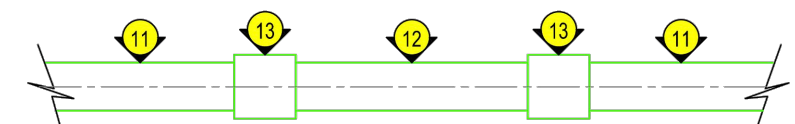
TYPE 2 REPAIR
REPLACEMENT SECTION OF
CAST IRON / DUCTILE IRON



TYPE 3 REPAIR
REPLACEMENT
ASBESTOS CEMENT PIPE



TYPE 4 REPAIR
REPLACEMENT SECTION FOR
uPVC MAIN

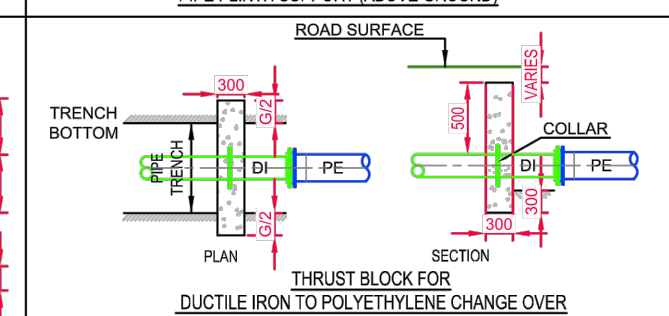
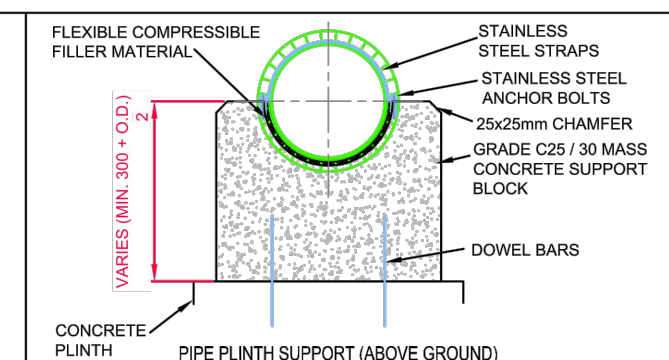
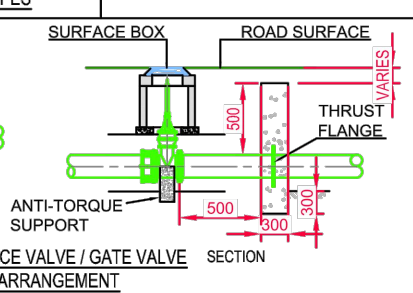
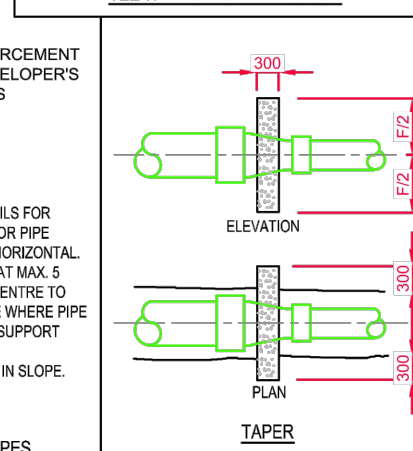
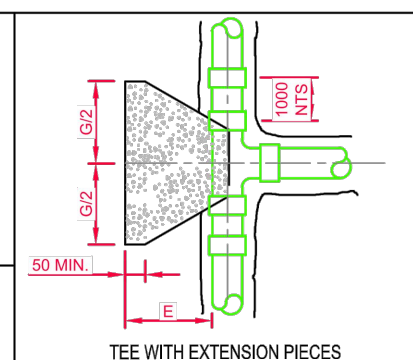
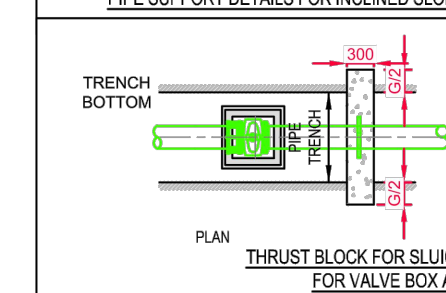
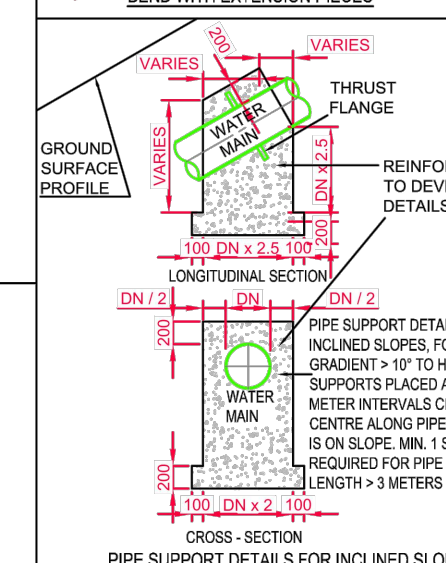
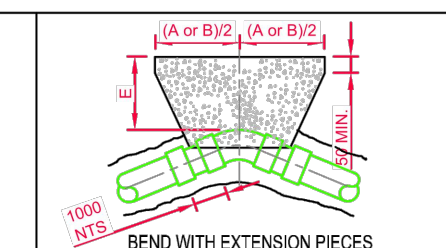
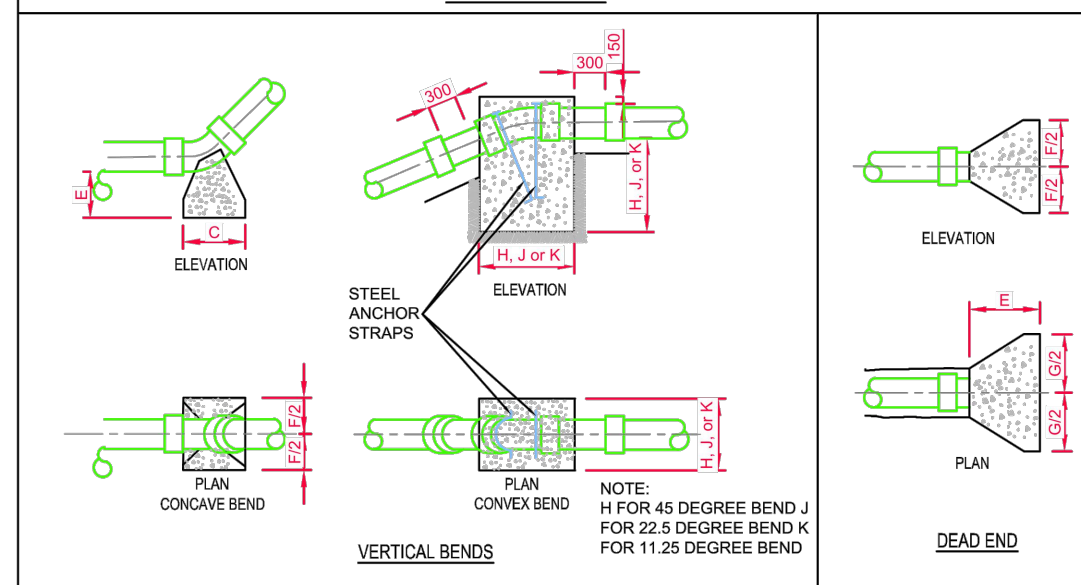
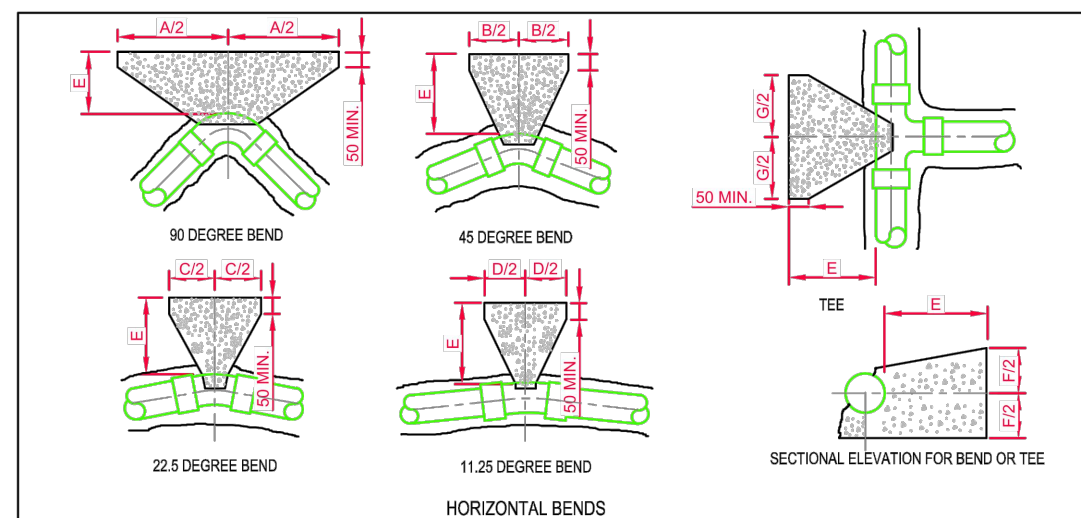


TYPE 5 REPAIR
REPLACEMENT SECTION OF
PE MAIN

- LEGEND:**
- STAINLESS STEEL WRAP AROUND CLAMP (GRADE 1.4571), ELASTOMER RUBBER GASKET WITH VULCANIZED REINFORCEMENT SHEET OF STAINLESS STEEL.
 - EXISTING ST / uPVC/ DI OR CI PIPE.
 - REPLACEMENT SECTION (MINIMUM 1.0 M) OF PLAIN ENDED DUCTILE IRON PIPE.
 - MULTI FIT UNIVERSAL COUPLING.
 - EXISTING CAST IRON OR DUCTILE IRON PIPE.
 - EXISTING ASBESTOS MAIN.
 - REPLACEMENT OF FULL SECTION OF AC MAIN WITH A FULL LENGTH OF AN ALTERNATIVE IRISH WATER APPROVED PIPE MATERIAL.
 - SPECIAL TRANSITIONAL COUPLER (TO FIT TURNED END OF AC PIPE).
 - EXISTING PVC MAIN.
 - REPLACEMENT SECTION OF AN ALTERNATIVE IRISH WATER APPROVED PIPE MATERIAL (MINIMUM 1.0m) CUT TO LENGTH.
 - EXISTING PE PIPE.
 - REPLACEMENT SECTION OF PE PIPE.
 - FUSION WELDED COUPLING.
 - PIPE MATERIAL REFERENCES AS FOLLOWS:
AC - ASBESTOS CEMENT.
DI - DUCTILE IRON.
CI - CAST IRON.
PE - POLYETHYLENE.
uPVC - UNPLASTICISED POLY VINYL CHLORIDE.
ST - STEEL.
 - REPAIRS TO EXISTING WATER MAINS THAT ARE IN OWNERSHIP OF IRISH WATER SHALL BE CARRIED OUT BY IRISH WATER OR AN AGENT OF IRISH WATER.
 - REPAIRS TO EXISTING WATER MAINS TO BE CARRIED OUT BY CONTRACTORS WHO ARE DEEMED COMPETENT BY IRISH WATER TO CARRY OUT SUCH REPAIRS. THESE REPAIRS SHALL BE CARRIED OUT IN ACCORDANCE WITH AN AGREED METHOD STATEMENT, SAFETY AND HEALTH PLAN AND HYGIENE PLAN.
 - A HIGH LEVEL OF HEALTH & SAFETY PROCEDURES IS REQUIRED WHEN WORKING ON AC MAINS, & THE OPERATION OF DISMANTLING/ REMOVAL OF AC PIPES & JOINTS.

THIS DRAWING IS COPYRIGHT
Dimensions are in mm except where indicated.
Figured dimensions take precedence over scaled measurements. All dimensions to be checked on site prior to fabrication or construction. All works to be in accordance with Current Building Regulations and Codes. (Sub)contractors are responsible for ensuring compliance with Building Regulations within their trade. Where this drawing is open to public inspection pursuant to a statutory requirement, or is on a statutory register, copying is subject to the requirements of Section 74 of the Copyright and Related Rights Act, 2000

Drawn By CC	Chkd By CC	Approved By CC	DWG Date 19/09/25	Scale NTS	Purpose Code P03	Acceptance Code S	Rev. 0	Stage Planning
CroCon Engineers Ltd. Consulting Engineers Unit 1, Building 6500, Avenue 6000, Cork Airport Business Park, Cork E: info@crocon.ie Tel: (021) 431 0709				Project: 22240 - CRO - X - XXX - DR - CE - 03159 Originator: Rockspring Properties Ltd. Spatial Zone: Baneshane, Middleton LRD Level: Info Type: Role: Number:				
0	05/25	CW	Issue 0					
REVISION	DATE	BY	DETAILS					



- ALL DIMENSIONS IN MILLIMETRES (mm) UNLESS NOTED OTHERWISE.
- CONCRETE THRUST BLOCKS (ANCHORAGE) SHALL BE POSITIONED SYMMETRICALLY WITH RESPECT TO THE CONNECTING PIPE & BENDS.
- TRENCH DIMENSIONS: REFER TO DRAWING No's. STD-W-13.
- THRUST BLOCKS SHALL BEAR ON UNDISTURBED SOIL. IF FOR ANY REASON THEY CANNOT THEN THE DEVELOPER SHALL NOTIFY IRISH WATER IMMEDIATELY WITH A PROPOSED SOLUTION.
- THRUST BLOCK REINFORCEMENT REQUIRES SPECIFIC DESIGN.
- FOR TEST PRESSURES GREATER THAN 18 BAR, THRUST BLOCK DESIGN IS TO BE SUBMITTED TO IRISH WATER FOR REVIEW.
- THRUST BLOCKS ARE DESIGNED FOR AN AVERAGE BEARING PRESSURE OF 100 KN/M² (TYPICAL FOR SOFT CLAY) FOR OTHER CONDITIONS. ACTUAL DIMENSIONS MAY BE ALTERED ON INSTRUCTIONS FROM IRISH WATER.
- CONCRETE IN THRUST BLOCKS SHALL BE GRADE C20/25.
- COMPRESSIBLE FILLER FOR CONCRETE PROTECTION TO BE IN ACCORDANCE WITH BS EN 622-1 AND BS EN 622-4. BITUMINOUS MATERIAL SHALL NOT BE PUT IN CONTACT WITH PLASTIC PIPES. THE THICKNESS OF COMPRESSIBLE FILLER FOR MAINS < 450mm IN DIAMETER IS TO BE 18mm.
- CONCRETE THRUST BLOCKS FOR POLYETHYLENE PIPE TO COMPLY WITH THE MANUFACTURERS REQUIREMENTS.
- POLYETHYLENE PIPES SHALL BE WRAPPED IN PLASTIC SHEETING HAVING A COMPOSITION IN ACCORDANCE WITH BS 6076 BEFORE BEING CAST INTO CONCRETE.
- ALL CONCRETE TO BE IN ACCORDANCE WITH IS EN 206.

NOM. DIA. (mm)	< 12 BAR TEST PRESSURE									
	A	B	C	D	E	F	G	H	J	K
100	600	330	160	80	200	350	390	700	600	400
150	950	510	260	130	225	450	660	900	750	600
200	1150	600	310	160	300	650	790	1050	900	700
250	1350	750	380	200	300	800	970	1200	1000	750
300	1580	850	450	220	320	950	1110	1300	1100	850
350	2100	1150	570	290	450	1000	1450	1550	1200	900
400	2550	1400	700	350	500	1050	1800	1700	1250	1000
450	3000	1630	830	420	680	1100	2130	1800	1450	1150
500	3590	1950	990	500	800	1200	2540	1950	1600	1250
600	4100	2200	1120	570	850	1400	2880	2100	1700	1300

NOM. DIA. (mm)	12 BAR TO 15 BAR TEST PRESSURE									
	A	B	C	D	E	F	G	H	J	K
100	700	380	190	100	200	350	510	750	600	400
150	1135	620	320	160	225	450	760	950	750	600
200	1400	750	380	190	300	650	980	1150	950	700
250	1730	940	480	240	320	800	1210	1350	1050	850
300	2090	1130	580	300	380	950	1480	1500	1200	950
350	2600	1410	720	360	500	1050	1840	1700	1350	1050
400	2980	1610	820	420	750	1200	2110	1850	1500	1150
450	3400	1840	940	470	900	1300	2330	2000	1600	1250
500	4090	2210	1130	570	1000	1400	2890	2200	1750	1350
600	5010*	2710*	1380	700	1000	1500	3550*	2350	1900	1500

NOM. DIA. (mm)	15 BAR TO 18 BAR TEST PRESSURE									
	A	B	C	D	E	F	G	H	J	K
100	750	400	205	100	220	400	530	800	650	400
150	1250	700	350	180	250	500	890	1000	850	650
200	1650	890	450	230	320	700	1170	1250	1000	800
250	1960	1060	540	270	350	900	1370	1450	1150	900
300	2300	1200	640	320	500	1100	1630	1650	1300	1050
350	2930	1580	830	410	750	1200	2070	1850	1500	1150
400	3510	1900	970	190*	1000	1300	2490	2000	1600	1250
450	3810	2270	1160	580	1000	1350	2970	2150	1700	1350
500	4340*	2380	1210	610	1000	1400	3700	2250	1750	1400
600	6370*	3450*	1760	890	1000	1500	4500*	2400	2050	1650

TABLE OF DIMENSIONS FOR STEEPLY INCLINED PIPELINES	
GRADIENT	SPACING
1 IN 2 & STEEPER	5.5m
BELOW 1 IN 2 TO 1 IN 4	11.0m
1 IN 4 TO 1 IN 5	16.6m
1 IN 5 TO 1 IN 6	22.0m

REVISION	DATE	BY	DETAILS
0	05/25	CW	Issue 0

THIS DRAWING IS COPYRIGHT
 Dimensions are in mm except where indicated
 Figured dimensions take precedence over scaled measurements. All dimensions to be checked on site prior to fabrication or construction. All works to be in accordance with Current Building Regulations and Codes. (Sub)Contractors are responsible for ensuring compliance with Building Regulations within their trade. Where this drawing is open to public inspection pursuant to a statutory requirement, or is on a statutory register, copying is subject to the requirements of Section 74 of the Copyright and Related Rights Act, 2000

Drawn By: CC
 Chkd By: CC
 Approved By: CC
 DWG Date: 19/09/25
 Scale: NTS
 Purpose Code: P03
 Acceptance Code: S
 Rev: 0
 Stage: Planning

CroCon Engineers Ltd.
 Consulting Engineers
 Unit 1, Building 6500, Avenue 6000,
 Cork Airport Business Park, Cork
 E: info@crocon.ie Tel: (021) 431 0709

Project: 22240 - CRO - X - XXX - DR - CE - 03160
 Originator: Rockspring Properties Ltd.
 Spatial Zone: Baneshane, Midleton LRD
 Level: Info Type: Role: Number:
 Title: STD-W-28